

LEGEND	
	PEDESTRIAN PATH
	FUTURE PEDESTRIAN PATH
	VEHICULAR DIRECTION
	LOADING CIRCULATION
	BIKE RACK
	ENTRY POINT
	CONNECTION TO GAD



© 2013 Solomon Cordwell Buenz

**SITE DIAGRAM
GATEWAY BUILDING**

Oberlin College

07172013



2012007



OBERLIN COLLEGE GATEWAY BUILDING



Site Plan Review - July 17, 2013



SCB

© 2013 Solomon Cordwell Buenz

**VIEW OF SOUTH-WEST CORNER
GATEWAY BUILDING**
Oberlin College

07.17.2013

2012007





SCB

© 2013 Solomon Cordwell Buenz

**VIEW OF WEST FACADE
GATEWAY BUILDING**
Oberlin College

07.17.2013

2012007





SCB

© 2013 Solomon Cordwell Buenz

**VIEW OF NORTH FACADE
GATEWAY BUILDING**

Oberlin College

07.17.2013

2012007





Exterior Aluminum Venetian Blinds
(E-SSCR-01)



Aluminum Panel (E-MTL02)



Zinc Panel (E-MTL01)

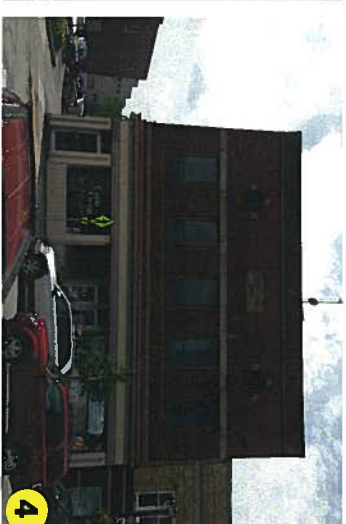
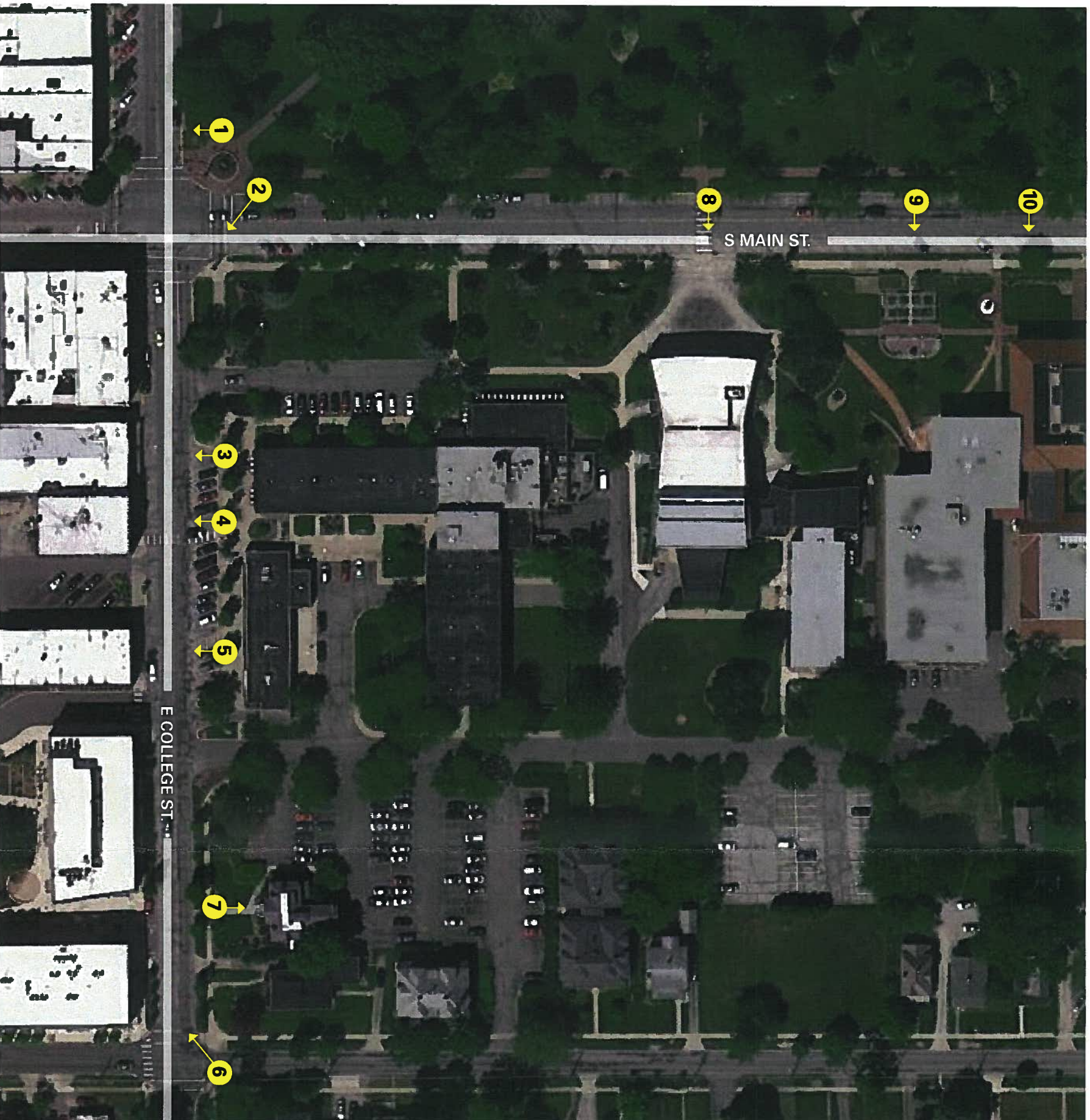


Stained Reclaimed Wood (E-WD-01)



Extruded Glass Fiber Concrete-
Panel (E-CPL01)





Oberlin Gateway Building					
		Parking requirements based on Chapter 1349, tables 1, 3 & 5	Utilization Rate	Total Parking based on Utilization and Chapter 1349, tables 1, 3 & 5.	Parking calculation based on Zoning Ordinance Chapter 1349, tables 1, 3 & 5.
					C1 Zoning Requirements (none required per 1349.01(d))

PARKING ANALYSIS - DAYTIME						
Hotel (Rooms)	67	67	70%	47	1 parking stall per room	0
Meeting Rooms (Seats)	320	80	70%	56	.25 parking stalls per person	0
Office (SF)	14,293 sf	50	60%	30	3.5 parking stalls per 1,000 sf	0
Restaurant/ Bar (SF)	2,597 sf	52	70%	36	20 parking stalls per 1,000 sf	0
Retail (SF)	8,980 sf	36	50%	18	4 parking stalls per 1,000 sf	0
Parking Spaces						
Area A	29					
Area B	96					
*Area C	76					
*Area D	20					
Total Parking Spaces	221	285		187		

PARKING ANALYSIS - NIGHTTIME						
		Parking requirements based on Chapter 1349, tables 1, 3 & 5	Utilization Rate	Total Parking based on Utilization and Chapters 1349, tables 1, 3 & 5.	Parking calculation based on Zoning Ordinance Chapter 1349, tables 1, 3 & 5.	C1 Zoning Requirements (none required per 1349.01(d))

Hotel (Rooms)	67	67	70%	47	1 parking stall per room	0
Meeting Rooms (Seats)	320	80	70%	56	.25 parking stalls per person	0
Restaurant/ Bar (SF)	2,597 sf	52	70%	36	20 parking stalls per 1,000 sf	0
Jazz Venue(SF)	2,345 sf	23	70%	16	10 parking stalls per 1,000 sf	0
Parking Spaces						
Area A	29					
Area B	96					
*Area C	76					
*Area D	20					
Total Parking Spaces	221	222		156		

* Projected additional spaces