

| LEGEND | |
|----------|-----------------------|
| [Symbol] | IRON CLAD PORTICO |
| [Symbol] | CONCRETE EXTERIOR |
| [Symbol] | CONCRETE EXTERIOR (P) |
| [Symbol] | ASPHALT |
| [Symbol] | ASPHALT DRIVE ALLEY |
| [Symbol] | PROPOSED |
| [Symbol] | TEMPORARY SEASONS |
| [Symbol] | PERMANENT SEASONS |
| [Symbol] | PERMANENT STAIR |
| [Symbol] | PERMANENT ELEVATOR |
| [Symbol] | PERMANENT PORTICO |
| [Symbol] | PERMANENT PORTICO (P) |
| [Symbol] | PERMANENT PORTICO (S) |
| [Symbol] | PERMANENT PORTICO (D) |
| [Symbol] | PERMANENT PORTICO (E) |
| [Symbol] | PERMANENT PORTICO (W) |
| [Symbol] | PERMANENT PORTICO (N) |
| [Symbol] | PERMANENT PORTICO (S) |
| [Symbol] | PERMANENT PORTICO (D) |
| [Symbol] | PERMANENT PORTICO (E) |
| [Symbol] | PERMANENT PORTICO (W) |
| [Symbol] | PERMANENT PORTICO (N) |

Solomon Cordwell Buenz
 www.scb.com
 Chicago 312.883.1100
 San Francisco 415.218.3460

NEFF ASSOCIATES
 Architects Planning Interior Design
 1000 Market Street, Suite 200
 San Francisco, CA 94102
 415.774.2222

SWP3 - EROSION & SED. CONTROL PLAN

Drawn By: [Name]
 Checked By: [Name]
 Project Number: 2012007

C2.2

REVISIONS

| NO. | DATE | DESCRIPTION |
|-----|----------|-----------------------------|
| 1 | 07/23/07 | ISSUED FOR SUBMITTAL PERMIT |
| 2 | 07/23/07 | ISSUED FOR SUBMITTAL PERMIT |
| 3 | 07/23/07 | ISSUED FOR SUBMITTAL PERMIT |
| 4 | 07/23/07 | ISSUED FOR SUBMITTAL PERMIT |
| 5 | 07/23/07 | ISSUED FOR SUBMITTAL PERMIT |
| 6 | 07/23/07 | ISSUED FOR SUBMITTAL PERMIT |
| 7 | 07/23/07 | ISSUED FOR SUBMITTAL PERMIT |
| 8 | 07/23/07 | ISSUED FOR SUBMITTAL PERMIT |
| 9 | 07/23/07 | ISSUED FOR SUBMITTAL PERMIT |
| 10 | 07/23/07 | ISSUED FOR SUBMITTAL PERMIT |

OBERLIN COLLEGE GATEWAY BUILDING

Oberlin, Ohio
 3077 Main Street, Oberlin, Ohio

Temporary Scheduling (15)

Temporary scheduling includes temporary work on scheduled events by providing appropriate safety guards, crowd control, and other safety measures. Temporary scheduling is used to provide for the safety of the public and to ensure that the event is conducted in a safe and orderly manner. Temporary scheduling is used to provide for the safety of the public and to ensure that the event is conducted in a safe and orderly manner.

| Scheduling Dates | Temporary Scheduling Specifics | |
|------------------------|--------------------------------|----------|
| | Start/End | Location |
| Event 1 to Event 15 | LA/2007/02 | LA/2007 |
| Event 16 to Event 30 | LA/2007/03 | LA/2007 |
| Event 31 to Event 45 | LA/2007/04 | LA/2007 |
| Event 46 to Event 60 | LA/2007/05 | LA/2007 |
| Event 61 to Event 75 | LA/2007/06 | LA/2007 |
| Event 76 to Event 90 | LA/2007/07 | LA/2007 |
| Event 91 to Event 105 | LA/2007/08 | LA/2007 |
| Event 106 to Event 120 | LA/2007/09 | LA/2007 |
| Event 121 to Event 135 | LA/2007/10 | LA/2007 |
| Event 136 to Event 150 | LA/2007/11 | LA/2007 |
| Event 151 to Event 165 | LA/2007/12 | LA/2007 |

1. Temporary scheduling is used to provide for the safety of the public and to ensure that the event is conducted in a safe and orderly manner.
2. Temporary scheduling is used to provide for the safety of the public and to ensure that the event is conducted in a safe and orderly manner.
3. Temporary scheduling is used to provide for the safety of the public and to ensure that the event is conducted in a safe and orderly manner.
4. Temporary scheduling is used to provide for the safety of the public and to ensure that the event is conducted in a safe and orderly manner.
5. Temporary scheduling is used to provide for the safety of the public and to ensure that the event is conducted in a safe and orderly manner.

Temporary Scheduling (16)

Temporary scheduling includes temporary work on scheduled events by providing appropriate safety guards, crowd control, and other safety measures. Temporary scheduling is used to provide for the safety of the public and to ensure that the event is conducted in a safe and orderly manner. Temporary scheduling is used to provide for the safety of the public and to ensure that the event is conducted in a safe and orderly manner.

Permanent Scheduling (18)

Permanent scheduling is used to provide for the safety of the public and to ensure that the event is conducted in a safe and orderly manner. Permanent scheduling is used to provide for the safety of the public and to ensure that the event is conducted in a safe and orderly manner.

| Scheduling Dates | Permanent Scheduling Specifics | |
|------------------------|--------------------------------|----------|
| | Start/End | Location |
| Event 1 to Event 15 | LA/2007/02 | LA/2007 |
| Event 16 to Event 30 | LA/2007/03 | LA/2007 |
| Event 31 to Event 45 | LA/2007/04 | LA/2007 |
| Event 46 to Event 60 | LA/2007/05 | LA/2007 |
| Event 61 to Event 75 | LA/2007/06 | LA/2007 |
| Event 76 to Event 90 | LA/2007/07 | LA/2007 |
| Event 91 to Event 105 | LA/2007/08 | LA/2007 |
| Event 106 to Event 120 | LA/2007/09 | LA/2007 |
| Event 121 to Event 135 | LA/2007/10 | LA/2007 |
| Event 136 to Event 150 | LA/2007/11 | LA/2007 |
| Event 151 to Event 165 | LA/2007/12 | LA/2007 |

1. Permanent scheduling is used to provide for the safety of the public and to ensure that the event is conducted in a safe and orderly manner.
2. Permanent scheduling is used to provide for the safety of the public and to ensure that the event is conducted in a safe and orderly manner.
3. Permanent scheduling is used to provide for the safety of the public and to ensure that the event is conducted in a safe and orderly manner.
4. Permanent scheduling is used to provide for the safety of the public and to ensure that the event is conducted in a safe and orderly manner.
5. Permanent scheduling is used to provide for the safety of the public and to ensure that the event is conducted in a safe and orderly manner.

Permanent Scheduling (19)

Permanent scheduling is used to provide for the safety of the public and to ensure that the event is conducted in a safe and orderly manner. Permanent scheduling is used to provide for the safety of the public and to ensure that the event is conducted in a safe and orderly manner.

| Scheduling Dates | Permanent Scheduling Specifics | |
|------------------------|--------------------------------|----------|
| | Start/End | Location |
| Event 1 to Event 15 | LA/2007/02 | LA/2007 |
| Event 16 to Event 30 | LA/2007/03 | LA/2007 |
| Event 31 to Event 45 | LA/2007/04 | LA/2007 |
| Event 46 to Event 60 | LA/2007/05 | LA/2007 |
| Event 61 to Event 75 | LA/2007/06 | LA/2007 |
| Event 76 to Event 90 | LA/2007/07 | LA/2007 |
| Event 91 to Event 105 | LA/2007/08 | LA/2007 |
| Event 106 to Event 120 | LA/2007/09 | LA/2007 |
| Event 121 to Event 135 | LA/2007/10 | LA/2007 |
| Event 136 to Event 150 | LA/2007/11 | LA/2007 |
| Event 151 to Event 165 | LA/2007/12 | LA/2007 |



OHIO PROFESSIONAL SERVICES
 CALL BEFORE YOU DIG
 1-800-362-2764
 www.ohio-professional-services.com

Solomon Cordwell Buenz
 www.scb.com
 Chicago 312.861.1100
 San Francisco 415.713.4400
 Architecture Planning Interior Design

NEPP ASSOCIATES
 2101 West 12th Street, Suite 200
 Minneapolis, MN 55404
 612.338.1100

| | |
|---|---------------------------------|
| OWNER: OBERLIN COLLEGE | PLANNING COMMISSION EXHIBIT 11A |
| DESIGNER: SOLOMON CORDWELL BUENZ | PLANNING COMMISSION EXHIBIT 11A |
| DATE: 2012.07.07 | PLANNING COMMISSION EXHIBIT 11A |
| PROJECT: OBERLIN COLLEGE GATEWAY BUILDING | PLANNING COMMISSION EXHIBIT 11A |
| NO. 2012.07.07 | PLANNING COMMISSION EXHIBIT 11A |

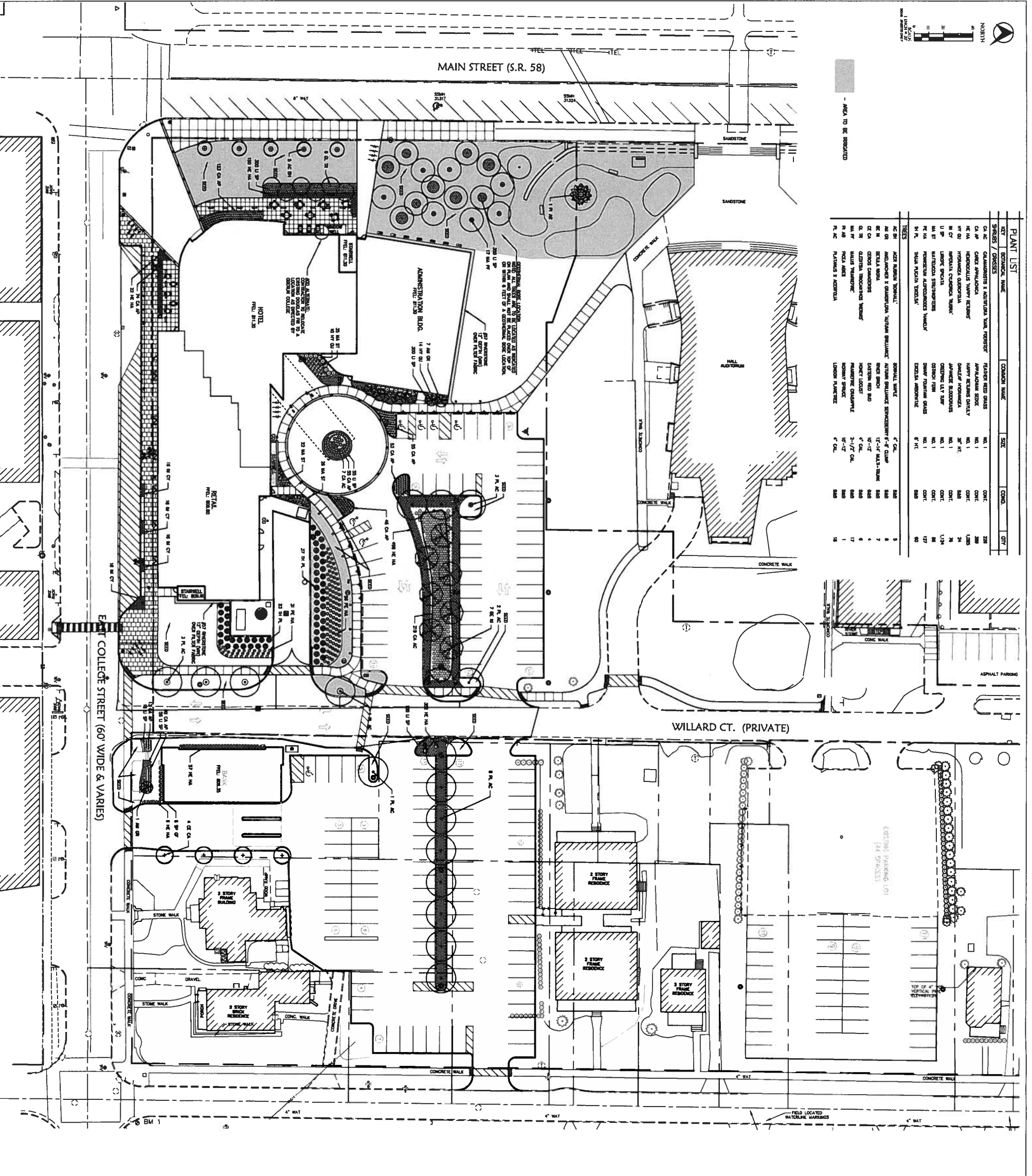
Oberlin, Ohio
 © 2012 Solomon Cordwell Buenz

SWP3 DETAILS
 Sheet Number: **C2.4**
 Date: 2012007



- AREA TO BE REGRADED

| KEY | SYMBOL | COMMON NAME | SIZE | QTY |
|-------|--------|------------------------------------|-------|--------|
| CA 1C | | QUAMOCOSUS & ADRIANA VIAL FOUNTAIN | NO. 1 | QTY: 1 |
| CA 1D | | APPLAUSUM SPICE | NO. 1 | QTY: 1 |
| CA 1E | | HEMOCULUS VARIETY BUSH | NO. 1 | QTY: 1 |
| CA 1F | | HYDRANGLA GIBBERNA | NO. 1 | QTY: 1 |
| CA 1G | | HYDRANGLA GIBBERNA | NO. 1 | QTY: 1 |
| CA 1H | | HYDRANGLA GIBBERNA | NO. 1 | QTY: 1 |
| CA 1I | | HYDRANGLA GIBBERNA | NO. 1 | QTY: 1 |
| CA 1J | | HYDRANGLA GIBBERNA | NO. 1 | QTY: 1 |
| CA 1K | | HYDRANGLA GIBBERNA | NO. 1 | QTY: 1 |
| CA 1L | | HYDRANGLA GIBBERNA | NO. 1 | QTY: 1 |
| CA 1M | | HYDRANGLA GIBBERNA | NO. 1 | QTY: 1 |
| CA 1N | | HYDRANGLA GIBBERNA | NO. 1 | QTY: 1 |
| CA 1O | | HYDRANGLA GIBBERNA | NO. 1 | QTY: 1 |
| CA 1P | | HYDRANGLA GIBBERNA | NO. 1 | QTY: 1 |
| CA 1Q | | HYDRANGLA GIBBERNA | NO. 1 | QTY: 1 |
| CA 1R | | HYDRANGLA GIBBERNA | NO. 1 | QTY: 1 |
| CA 1S | | HYDRANGLA GIBBERNA | NO. 1 | QTY: 1 |
| CA 1T | | HYDRANGLA GIBBERNA | NO. 1 | QTY: 1 |
| CA 1U | | HYDRANGLA GIBBERNA | NO. 1 | QTY: 1 |
| CA 1V | | HYDRANGLA GIBBERNA | NO. 1 | QTY: 1 |
| CA 1W | | HYDRANGLA GIBBERNA | NO. 1 | QTY: 1 |
| CA 1X | | HYDRANGLA GIBBERNA | NO. 1 | QTY: 1 |
| CA 1Y | | HYDRANGLA GIBBERNA | NO. 1 | QTY: 1 |
| CA 1Z | | HYDRANGLA GIBBERNA | NO. 1 | QTY: 1 |
| CA 2A | | HYDRANGLA GIBBERNA | NO. 1 | QTY: 1 |
| CA 2B | | HYDRANGLA GIBBERNA | NO. 1 | QTY: 1 |
| CA 2C | | HYDRANGLA GIBBERNA | NO. 1 | QTY: 1 |
| CA 2D | | HYDRANGLA GIBBERNA | NO. 1 | QTY: 1 |
| CA 2E | | HYDRANGLA GIBBERNA | NO. 1 | QTY: 1 |
| CA 2F | | HYDRANGLA GIBBERNA | NO. 1 | QTY: 1 |
| CA 2G | | HYDRANGLA GIBBERNA | NO. 1 | QTY: 1 |
| CA 2H | | HYDRANGLA GIBBERNA | NO. 1 | QTY: 1 |
| CA 2I | | HYDRANGLA GIBBERNA | NO. 1 | QTY: 1 |
| CA 2J | | HYDRANGLA GIBBERNA | NO. 1 | QTY: 1 |
| CA 2K | | HYDRANGLA GIBBERNA | NO. 1 | QTY: 1 |
| CA 2L | | HYDRANGLA GIBBERNA | NO. 1 | QTY: 1 |
| CA 2M | | HYDRANGLA GIBBERNA | NO. 1 | QTY: 1 |
| CA 2N | | HYDRANGLA GIBBERNA | NO. 1 | QTY: 1 |
| CA 2O | | HYDRANGLA GIBBERNA | NO. 1 | QTY: 1 |
| CA 2P | | HYDRANGLA GIBBERNA | NO. 1 | QTY: 1 |
| CA 2Q | | HYDRANGLA GIBBERNA | NO. 1 | QTY: 1 |
| CA 2R | | HYDRANGLA GIBBERNA | NO. 1 | QTY: 1 |
| CA 2S | | HYDRANGLA GIBBERNA | NO. 1 | QTY: 1 |
| CA 2T | | HYDRANGLA GIBBERNA | NO. 1 | QTY: 1 |
| CA 2U | | HYDRANGLA GIBBERNA | NO. 1 | QTY: 1 |
| CA 2V | | HYDRANGLA GIBBERNA | NO. 1 | QTY: 1 |
| CA 2W | | HYDRANGLA GIBBERNA | NO. 1 | QTY: 1 |
| CA 2X | | HYDRANGLA GIBBERNA | NO. 1 | QTY: 1 |
| CA 2Y | | HYDRANGLA GIBBERNA | NO. 1 | QTY: 1 |
| CA 2Z | | HYDRANGLA GIBBERNA | NO. 1 | QTY: 1 |
| CA 3A | | HYDRANGLA GIBBERNA | NO. 1 | QTY: 1 |
| CA 3B | | HYDRANGLA GIBBERNA | NO. 1 | QTY: 1 |
| CA 3C | | HYDRANGLA GIBBERNA | NO. 1 | QTY: 1 |
| CA 3D | | HYDRANGLA GIBBERNA | NO. 1 | QTY: 1 |
| CA 3E | | HYDRANGLA GIBBERNA | NO. 1 | QTY: 1 |
| CA 3F | | HYDRANGLA GIBBERNA | NO. 1 | QTY: 1 |
| CA 3G | | HYDRANGLA GIBBERNA | NO. 1 | QTY: 1 |
| CA 3H | | HYDRANGLA GIBBERNA | NO. 1 | QTY: 1 |
| CA 3I | | HYDRANGLA GIBBERNA | NO. 1 | QTY: 1 |
| CA 3J | | HYDRANGLA GIBBERNA | NO. 1 | QTY: 1 |
| CA 3K | | HYDRANGLA GIBBERNA | NO. 1 | QTY: 1 |
| CA 3L | | HYDRANGLA GIBBERNA | NO. 1 | QTY: 1 |
| CA 3M | | HYDRANGLA GIBBERNA | NO. 1 | QTY: 1 |
| CA 3N | | HYDRANGLA GIBBERNA | NO. 1 | QTY: 1 |
| CA 3O | | HYDRANGLA GIBBERNA | NO. 1 | QTY: 1 |
| CA 3P | | HYDRANGLA GIBBERNA | NO. 1 | QTY: 1 |
| CA 3Q | | HYDRANGLA GIBBERNA | NO. 1 | QTY: 1 |
| CA 3R | | HYDRANGLA GIBBERNA | NO. 1 | QTY: 1 |
| CA 3S | | HYDRANGLA GIBBERNA | NO. 1 | QTY: 1 |
| CA 3T | | HYDRANGLA GIBBERNA | NO. 1 | QTY: 1 |
| CA 3U | | HYDRANGLA GIBBERNA | NO. 1 | QTY: 1 |
| CA 3V | | HYDRANGLA GIBBERNA | NO. 1 | QTY: 1 |
| CA 3W | | HYDRANGLA GIBBERNA | NO. 1 | QTY: 1 |
| CA 3X | | HYDRANGLA GIBBERNA | NO. 1 | QTY: 1 |
| CA 3Y | | HYDRANGLA GIBBERNA | NO. 1 | QTY: 1 |
| CA 3Z | | HYDRANGLA GIBBERNA | NO. 1 | QTY: 1 |



SCB Solomon Cordwell Buenz
www.scb.com
Chicago 312.888.1100
San Francisco 415.218.2450

Architecture Planning Interior Design

NEFF ASSOCIATES
1110 N. LAKE STREET, SUITE 100
CHICAGO, IL 60610
TEL: 312.467.1100
WWW.NEFFASSOCIATES.COM

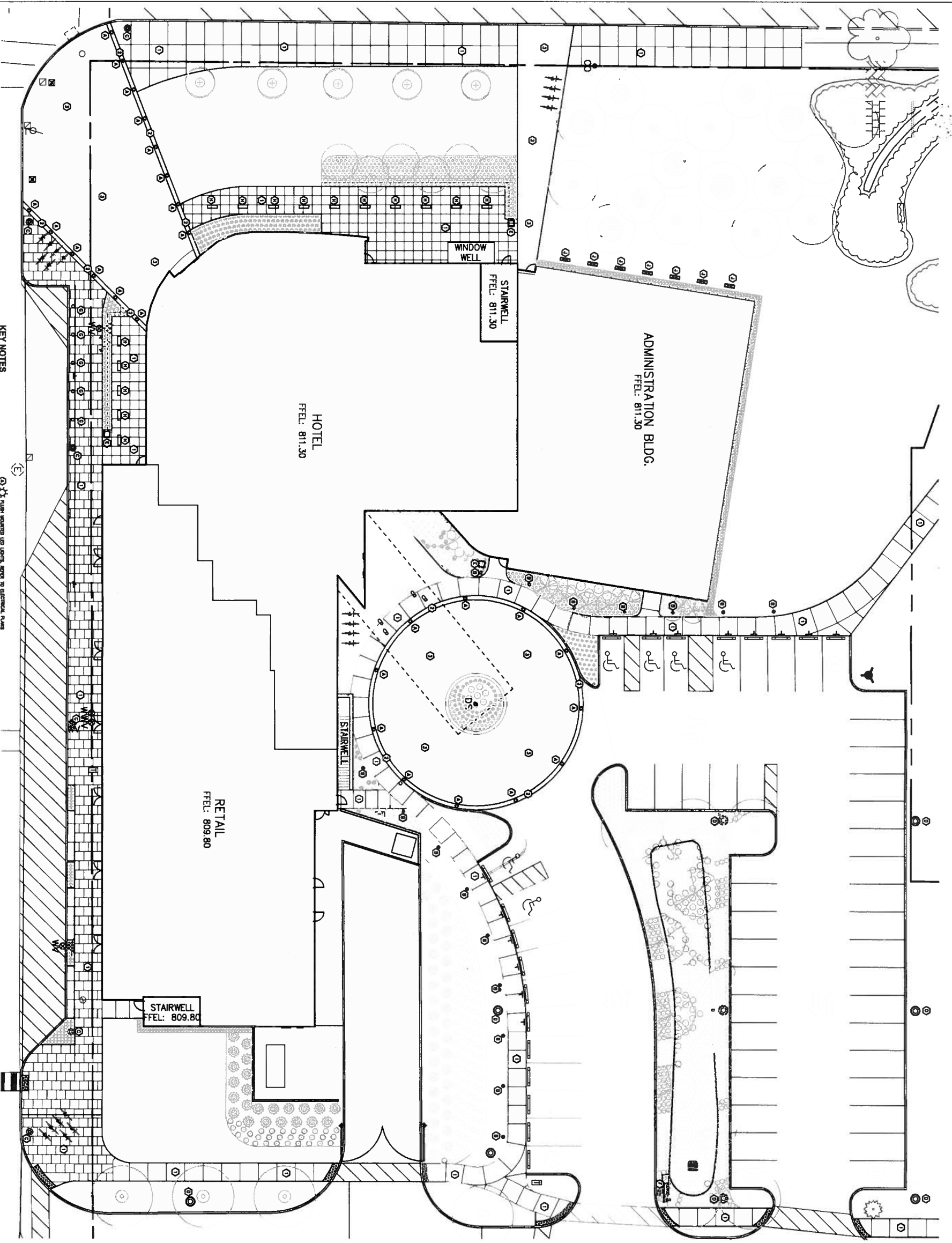
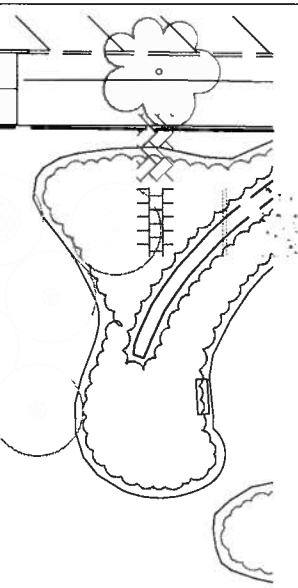
OBERLIN COLLEGE GATEWAY BUILDING

Oberlin, Ohio
© 2011 Solomon Cordwell Buenz

SITE LANDSCAPE PLAN

Drawn By: [Name]
Checked By: [Name]
Date: [Date]
Project Number: 2012007

Sheet Number: **C6.0**



1 SITE PLAN ENLARGEMENT
SCALE: 1" = 10'

- KEY NOTES**
- ① CONCRETE ANCHORS WITH SPOKE LINES AS SHOWN
 - ② 2" x 4" CONCRETE ANCHORS WITH GRouted ANCHORS LIGHTS
 - ③ 2" x 4" CONCRETE ANCHORS WITH GRouted ANCHORS LIGHTS
 - ④ 2" x 4" CONCRETE ANCHORS WITH GRouted ANCHORS LIGHTS
 - ⑤ 2" x 4" CONCRETE ANCHORS WITH GRouted ANCHORS LIGHTS
 - ⑥ 2" x 4" CONCRETE ANCHORS WITH GRouted ANCHORS LIGHTS
 - ⑦ 2" x 4" CONCRETE ANCHORS WITH GRouted ANCHORS LIGHTS
 - ⑧ 2" x 4" CONCRETE ANCHORS WITH GRouted ANCHORS LIGHTS
 - ⑨ 2" x 4" CONCRETE ANCHORS WITH GRouted ANCHORS LIGHTS
 - ⑩ 2" x 4" CONCRETE ANCHORS WITH GRouted ANCHORS LIGHTS
 - ⑪ 2" x 4" CONCRETE ANCHORS WITH GRouted ANCHORS LIGHTS
 - ⑫ 2" x 4" CONCRETE ANCHORS WITH GRouted ANCHORS LIGHTS
 - ⑬ 2" x 4" CONCRETE ANCHORS WITH GRouted ANCHORS LIGHTS
 - ⑭ 2" x 4" CONCRETE ANCHORS WITH GRouted ANCHORS LIGHTS
 - ⑮ 2" x 4" CONCRETE ANCHORS WITH GRouted ANCHORS LIGHTS
 - ⑯ 2" x 4" CONCRETE ANCHORS WITH GRouted ANCHORS LIGHTS
 - ⑰ 2" x 4" CONCRETE ANCHORS WITH GRouted ANCHORS LIGHTS
 - ⑱ 2" x 4" CONCRETE ANCHORS WITH GRouted ANCHORS LIGHTS
 - ⑲ 2" x 4" CONCRETE ANCHORS WITH GRouted ANCHORS LIGHTS
 - ⑳ 2" x 4" CONCRETE ANCHORS WITH GRouted ANCHORS LIGHTS
 - ㉑ 2" x 4" CONCRETE ANCHORS WITH GRouted ANCHORS LIGHTS
 - ㉒ 2" x 4" CONCRETE ANCHORS WITH GRouted ANCHORS LIGHTS
 - ㉓ 2" x 4" CONCRETE ANCHORS WITH GRouted ANCHORS LIGHTS
 - ㉔ 2" x 4" CONCRETE ANCHORS WITH GRouted ANCHORS LIGHTS
 - ㉕ 2" x 4" CONCRETE ANCHORS WITH GRouted ANCHORS LIGHTS
 - ㉖ 2" x 4" CONCRETE ANCHORS WITH GRouted ANCHORS LIGHTS
 - ㉗ 2" x 4" CONCRETE ANCHORS WITH GRouted ANCHORS LIGHTS
 - ㉘ 2" x 4" CONCRETE ANCHORS WITH GRouted ANCHORS LIGHTS
 - ㉙ 2" x 4" CONCRETE ANCHORS WITH GRouted ANCHORS LIGHTS
 - ㉚ 2" x 4" CONCRETE ANCHORS WITH GRouted ANCHORS LIGHTS
 - ㉛ 2" x 4" CONCRETE ANCHORS WITH GRouted ANCHORS LIGHTS
 - ㉜ 2" x 4" CONCRETE ANCHORS WITH GRouted ANCHORS LIGHTS
 - ㉝ 2" x 4" CONCRETE ANCHORS WITH GRouted ANCHORS LIGHTS
 - ㉞ 2" x 4" CONCRETE ANCHORS WITH GRouted ANCHORS LIGHTS
 - ㉟ 2" x 4" CONCRETE ANCHORS WITH GRouted ANCHORS LIGHTS
 - ㊱ 2" x 4" CONCRETE ANCHORS WITH GRouted ANCHORS LIGHTS
 - ㊲ 2" x 4" CONCRETE ANCHORS WITH GRouted ANCHORS LIGHTS
 - ㊳ 2" x 4" CONCRETE ANCHORS WITH GRouted ANCHORS LIGHTS
 - ㊴ 2" x 4" CONCRETE ANCHORS WITH GRouted ANCHORS LIGHTS
 - ㊵ 2" x 4" CONCRETE ANCHORS WITH GRouted ANCHORS LIGHTS
 - ㊶ 2" x 4" CONCRETE ANCHORS WITH GRouted ANCHORS LIGHTS
 - ㊷ 2" x 4" CONCRETE ANCHORS WITH GRouted ANCHORS LIGHTS
 - ㊸ 2" x 4" CONCRETE ANCHORS WITH GRouted ANCHORS LIGHTS
 - ㊹ 2" x 4" CONCRETE ANCHORS WITH GRouted ANCHORS LIGHTS
 - ㊺ 2" x 4" CONCRETE ANCHORS WITH GRouted ANCHORS LIGHTS
 - ㊻ 2" x 4" CONCRETE ANCHORS WITH GRouted ANCHORS LIGHTS
 - ㊼ 2" x 4" CONCRETE ANCHORS WITH GRouted ANCHORS LIGHTS
 - ㊽ 2" x 4" CONCRETE ANCHORS WITH GRouted ANCHORS LIGHTS
 - ㊾ 2" x 4" CONCRETE ANCHORS WITH GRouted ANCHORS LIGHTS
 - ㊿ 2" x 4" CONCRETE ANCHORS WITH GRouted ANCHORS LIGHTS



| NO. | DATE | DESCRIPTION |
|-----|------|--------------------|
| 1 | | ISSUED FOR PERMITS |
| 2 | | ISSUED FOR PERMITS |
| 3 | | ISSUED FOR PERMITS |
| 4 | | ISSUED FOR PERMITS |
| 5 | | ISSUED FOR PERMITS |
| 6 | | ISSUED FOR PERMITS |
| 7 | | ISSUED FOR PERMITS |
| 8 | | ISSUED FOR PERMITS |
| 9 | | ISSUED FOR PERMITS |
| 10 | | ISSUED FOR PERMITS |

OBERLIN COLLEGE
GATEWAY BUILDING

Danville, Ohio
12011 Main Street, Danville, Ohio 45015

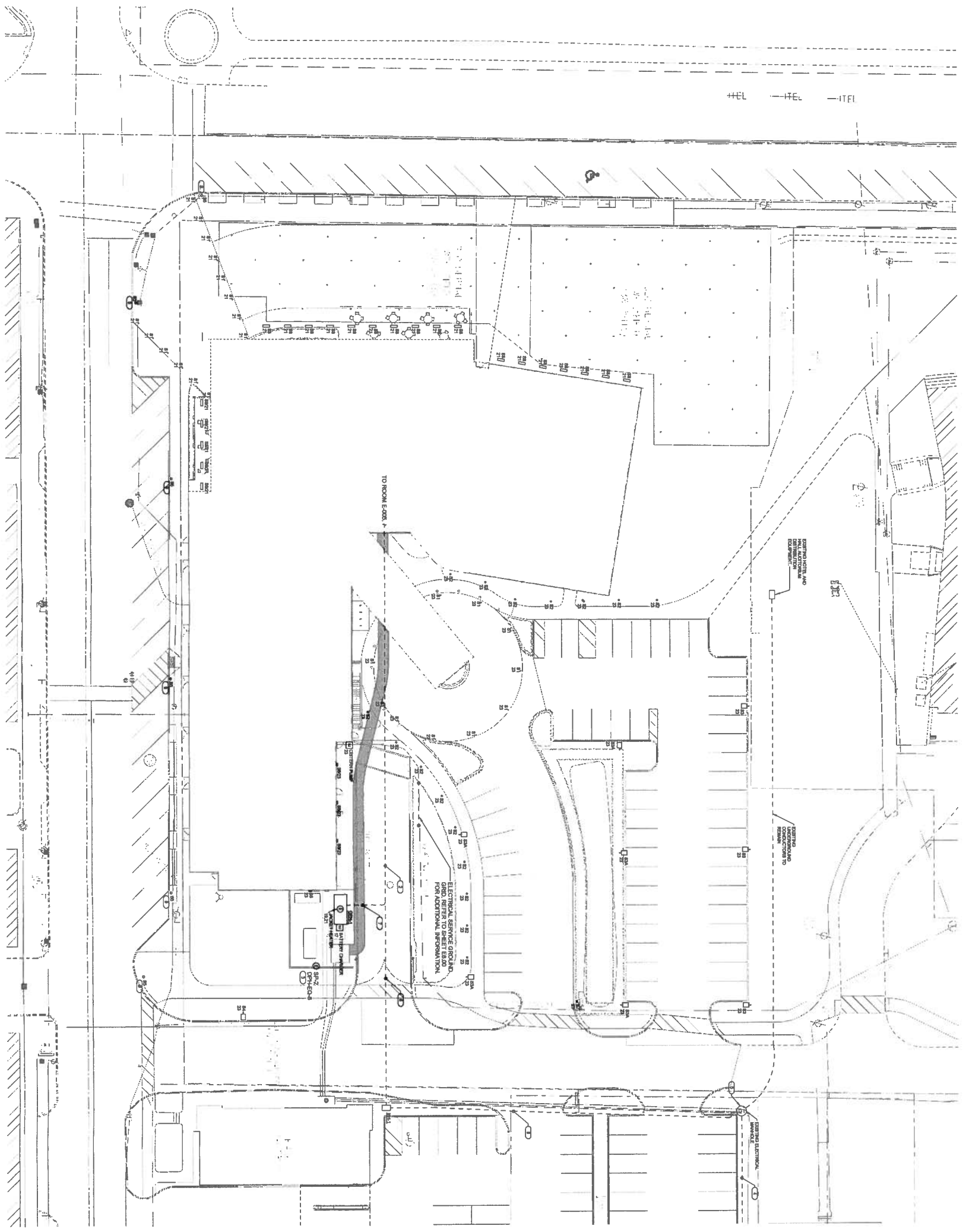
SITE LANDSCAPE
ENLARGEMENTS

Drawn By: [Name]
Checked By: [Name]
Project Number: 2012007
Sheet Number: C6.1



NEFF
ASSOCIATES
2440 W. 12th Street
Cincinnati, Ohio 45228
Tel: 513.251.1100
Fax: 513.251.1101
www.neff.com

SCP Solomon Cordwell Buenz
www.scb.com
Chicago 312.896.1100
San Francisco 415.318.2450
Architects Planning Interior Design



- REVISIONS:**
1. REVISION TO RFP FOR ELECTRICAL SYMBOLS, L.S.T.
 2. ELECTRICAL SYMBOLS AND ELECTRICAL
 3. ELECTRICAL SYMBOLS AND ELECTRICAL
 4. ELECTRICAL SYMBOLS AND ELECTRICAL
 5. ELECTRICAL SYMBOLS AND ELECTRICAL
 6. ELECTRICAL SYMBOLS AND ELECTRICAL
 7. ELECTRICAL SYMBOLS AND ELECTRICAL
 8. ELECTRICAL SYMBOLS AND ELECTRICAL
 9. ELECTRICAL SYMBOLS AND ELECTRICAL
 10. ELECTRICAL SYMBOLS AND ELECTRICAL

- REVISIONS:**
1. REVISION TO RFP FOR ELECTRICAL SYMBOLS, L.S.T.
 2. ELECTRICAL SYMBOLS AND ELECTRICAL
 3. ELECTRICAL SYMBOLS AND ELECTRICAL
 4. ELECTRICAL SYMBOLS AND ELECTRICAL
 5. ELECTRICAL SYMBOLS AND ELECTRICAL
 6. ELECTRICAL SYMBOLS AND ELECTRICAL
 7. ELECTRICAL SYMBOLS AND ELECTRICAL
 8. ELECTRICAL SYMBOLS AND ELECTRICAL
 9. ELECTRICAL SYMBOLS AND ELECTRICAL
 10. ELECTRICAL SYMBOLS AND ELECTRICAL

SCB
Solomon
Cordwell
Blantz

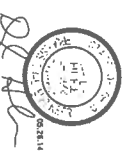
Chicago
312.888.1100
San Francisco
415.218.2450

Architects Planning Interior Design

KJ
ENGINEERING
CONSULTANTS

STRUCTURAL, MECHANICAL, ELECTRICAL
PLUMBING, SPECIALty ENGINEERING SOLUTIONS

| NO. | DATE | DESCRIPTION |
|-----|----------|-----------------------|
| 1 | 08.15.07 | ISSUED FOR PERMITTING |
| 2 | 08.15.07 | ISSUED FOR PERMITTING |
| 3 | 08.15.07 | ISSUED FOR PERMITTING |
| 4 | 08.15.07 | ISSUED FOR PERMITTING |
| 5 | 08.15.07 | ISSUED FOR PERMITTING |
| 6 | 08.15.07 | ISSUED FOR PERMITTING |
| 7 | 08.15.07 | ISSUED FOR PERMITTING |
| 8 | 08.15.07 | ISSUED FOR PERMITTING |
| 9 | 08.15.07 | ISSUED FOR PERMITTING |
| 10 | 08.15.07 | ISSUED FOR PERMITTING |



**OBERLIN GATEWAY
BUILDING**

Oberlin, Ohio
© 2011 Solomon Cordwell Blantz

**SITE PLAN -
ELECTRICAL**

Drawn By: [Name]
Checked By: [Name]
Project Number: 2012007

Sheet Number:
E1.00

SITE PLAN - ELECTRICAL



Honey Locust



River Birch



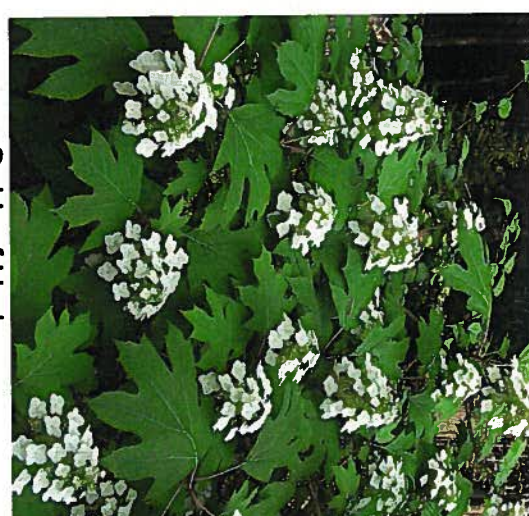
Serviceberry



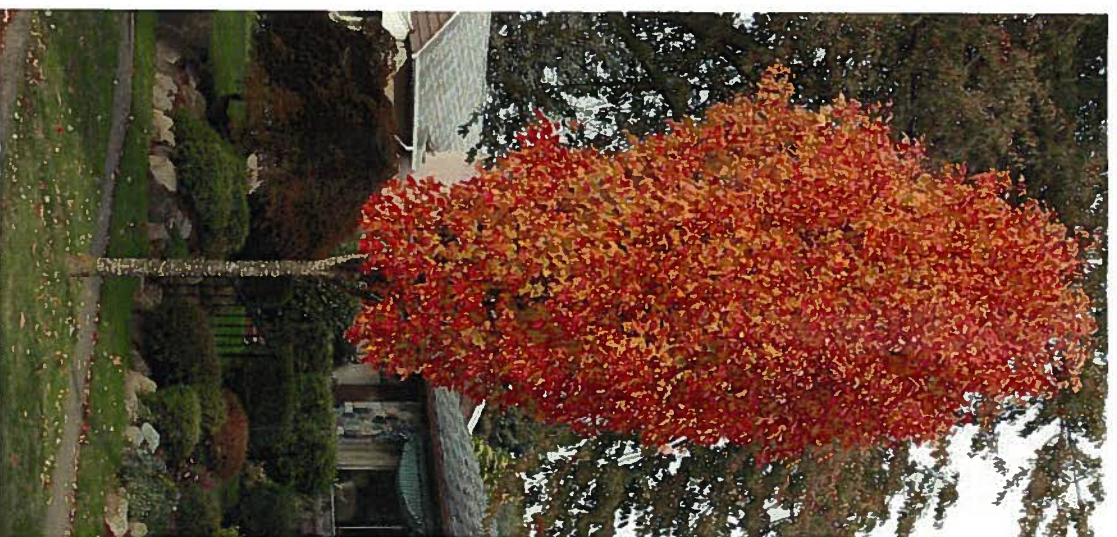
Prairie Fire Crabapple



Dwarf Fountain Grass



Oakleaf Hydrangea



Bowhall Maple



Feather Reed Grass



Japanese Bloodgrass



Happy Returns Daylily



Norway Spruce



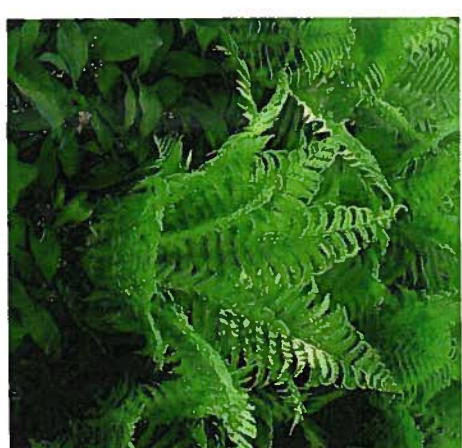
London Planetree



Appalachian Sedge



Creeping Lilyturf



Ostrich Fern



Excelsa Arborvitae

Date: June 2014
Project #: 13640

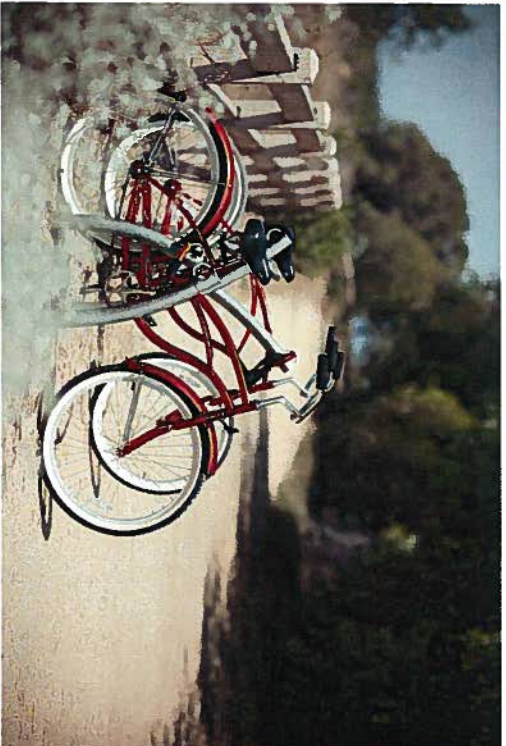
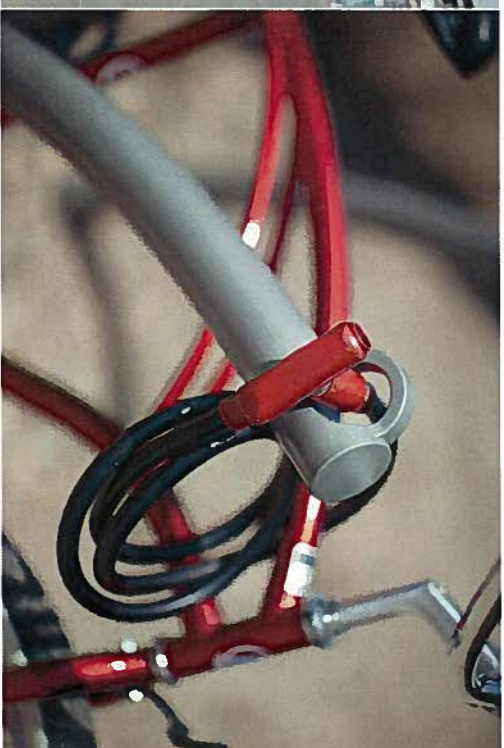
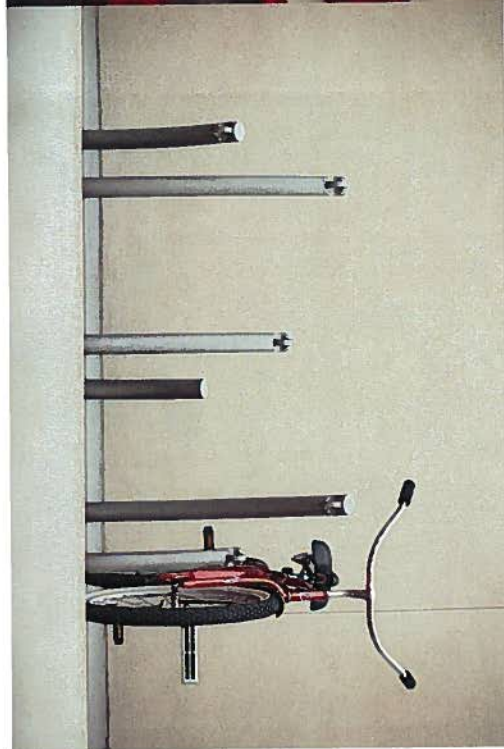
Plant Material

Gateway Building - Oberlin College



NEEFF
& ASSOCIATES

Civil Engineers • Landscape Architects • Planners • Surveyors
Traffic Engineers • Environmental Engineers



BIKE GARDEN™ BIKE RACK



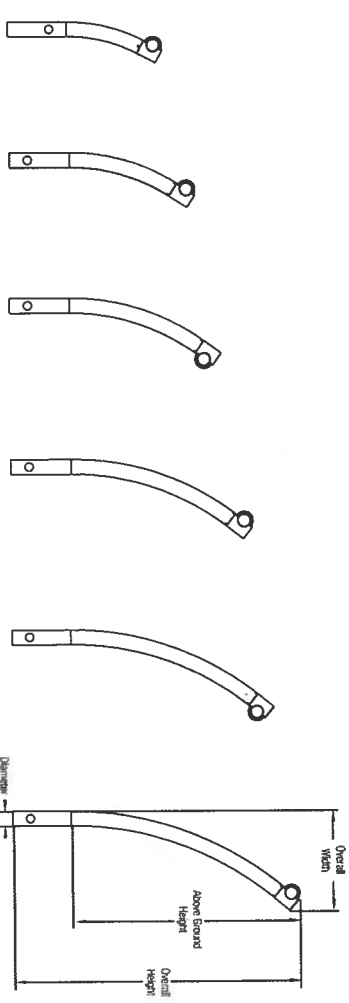
PRODUCT DATA

Inspired by organic forms, the Bike Garden provides a truly unique solution to the increasing challenges of bike parking and security. Its "stems" can be arranged in a wide variety of configurations to creatively accommodate almost any setting and provide riders with the added assurance of multiple locking points to secure the frame and wheels. Constructed entirely of rugged, corrosion-resistant stainless steel, Bike Garden's stems can be surface mounted or cast-in-place and may be purchased individually for maximum arrangement flexibility or in pre-configured layouts.

MATERIALS & FINISHES

| MATERIALS | FINISH | GUIDELINES & SECURITY | INSTALLATION | MAINTENANCE |
|---|--|--|---|--|
| <ul style="list-style-type: none"> Constructed entirely of corrosion-resistant stainless steel. Head and optional surface mount tool are cast stainless steel body is stainless steel tubing. | <ul style="list-style-type: none"> Available in stainless steel with a radial Satin finish or powdercoated. Standard powdercoat colors are Aluminum, Texture and Slate. Feature, optional colors from the 1-5 color chart and custom PPL colors are available for an upcharge. Due to the inherent nature of metal castings, glass powdercoats are not offered for cast components. | <ul style="list-style-type: none"> Configurations A, B, and C of the Bike Garden Bike Rack meet Association of Pedestrian and Bicycle Professionals (APBP) recommendations. Slate Feature, optional colors from the 1-5 color chart and custom PPL colors are available for an upcharge. Due to the inherent nature of metal castings, glass powdercoats are not offered for cast components. | <ul style="list-style-type: none"> Bike Garden can be cast-in-place or surface mounted. Anchors and stainless steel screws are included for surface mount. | <ul style="list-style-type: none"> Metal surfaces can be cleaned as needed using a soft cloth or brush with warm water and a mild detergent. Avoid abrasive cleaners. |

NOMINAL DIMENSIONS (Cast-in-place)



| MODEL | ABOVE-GROUND HEIGHT | OVERALL HEIGHT | OVERALL WIDTH | DIAMETER | WEIGHT |
|---------------|---------------------|------------------|----------------|----------------|-------------------|
| SKGAR-162-CIP | 16.2" (411 mm) | 26.2" (665 mm) | 7.1" (180 mm) | 2.5" (63.5 mm) | 8.6 lbs (3.9 kg) |
| SKGAR-208-CIP | 20.8" (528 mm) | 30.8" (782 mm) | 9.2" (234 mm) | 2.5" (63.5 mm) | 9.8 lbs (4.4 kg) |
| SKGAR-254-CIP | 25.3" (643 mm) | 35.3" (897 mm) | 11.8" (300 mm) | 2.5" (63.5 mm) | 11.3 lbs (5.1 kg) |
| SKGAR-300-CIP | 29.9" (759 mm) | 39.9" (1,013 mm) | 13.3" (338 mm) | 2.5" (63.5 mm) | 12.7 lbs (5.8 kg) |
| SKGAR-344-CIP | 34.4" (874 mm) | 44.4" (1,128 mm) | 15.8" (401 mm) | 2.5" (63.5 mm) | 14.1 lbs (6.4 kg) |
| SKGAR-391-CIP | 39.1" (993 mm) | 49.1" (1,247 mm) | 17.3" (439 mm) | 2.5" (63.5 mm) | 15.4 lbs (7.0 kg) |

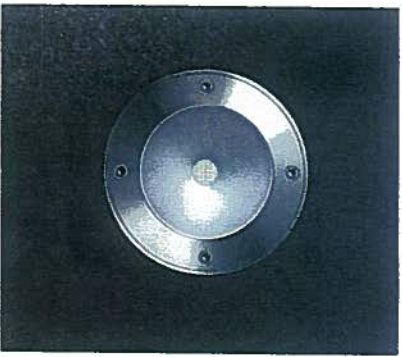
Date: 6/2/2014
Proj. #: 13640

Proposed Bike Rack

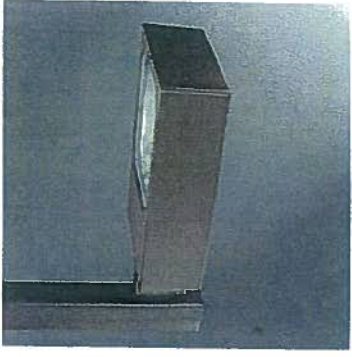
Smart Hotel - Oberlin



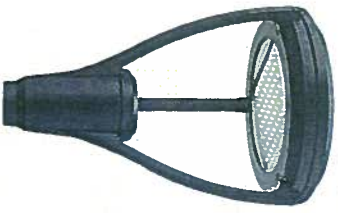
NEFF
& ASSOCIATES



Bega In-Ground LED Light



Lithonia Lumark Site Luminaire



Lithonia MRP-LED1 Site Luminaire



Surface Mounted Floodlight



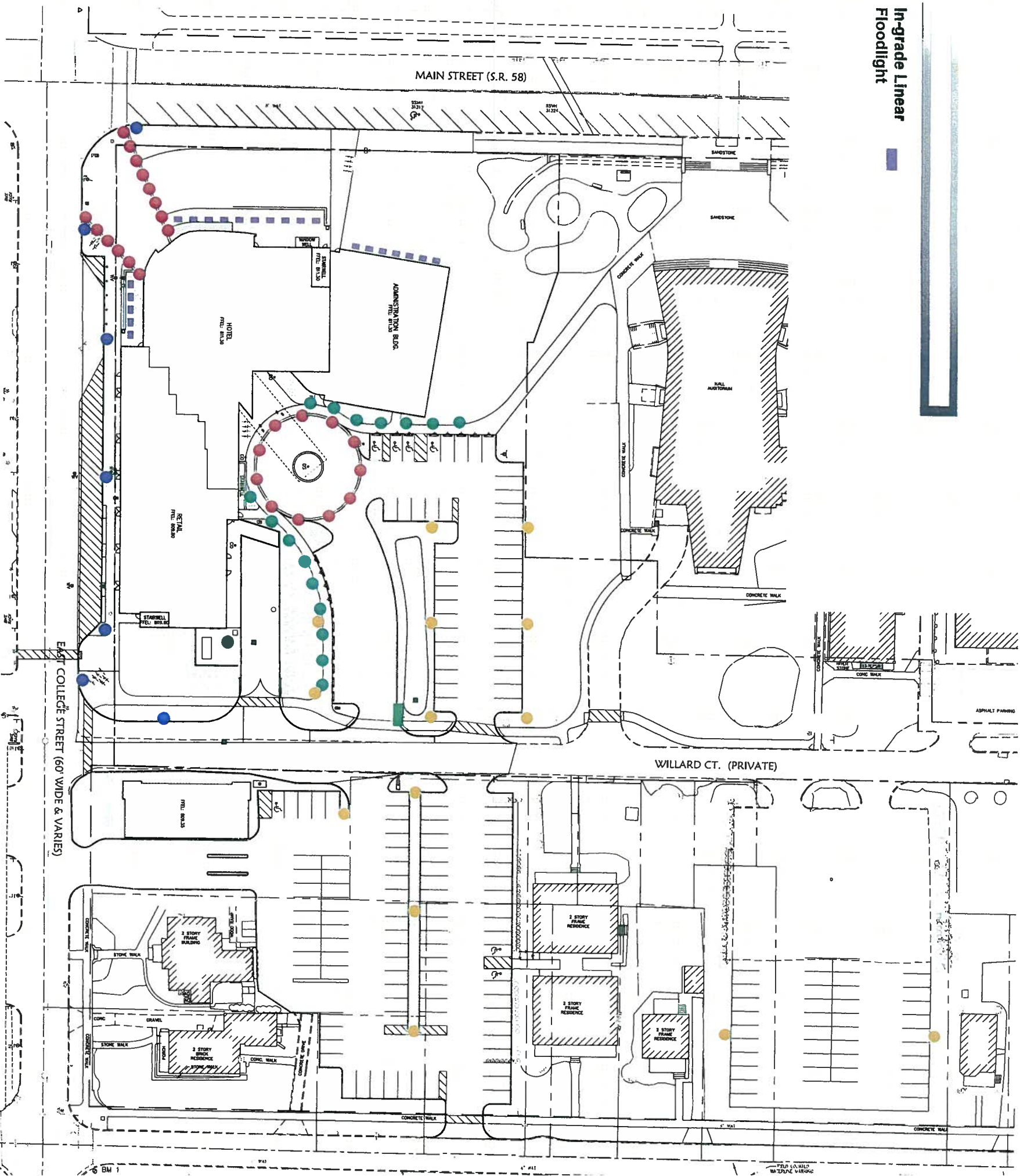
Lighted Stainless Steel Bollard

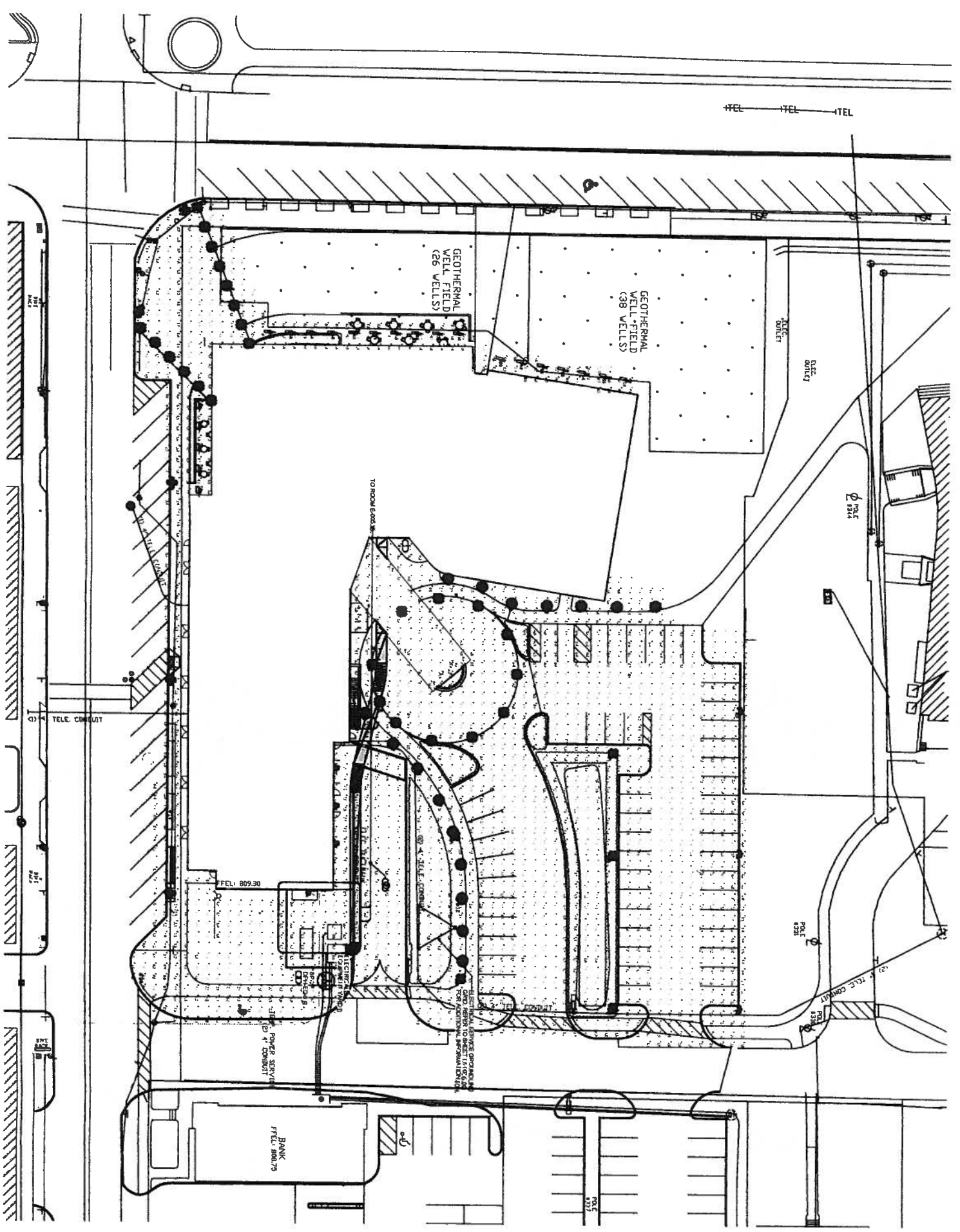


City of Oberlin Standard Post Light



In-grade Linear Floodlight





1 SITE PHOTOMETRIC PLAN

SCP Solomon Cordwell Buenz

Chicago
312.885.1100
San Francisco
415.215.2450

KSJ ENGINEERING CONSULTANTS

STRUCTURAL, MECHANICAL, ELECTRICAL, PLUMBING, AND FIRE PROTECTION

NOT FOR CONSTRUCTION
CONTRACT DOCUMENT
PROGRESS SET 03.21.14

OBERLIN GATEWAY BUILDING

Ohio, Ohio
SITE PHOTOMETRIC PLAN

Sheet Number
E1.01
Project Number:
2012007

