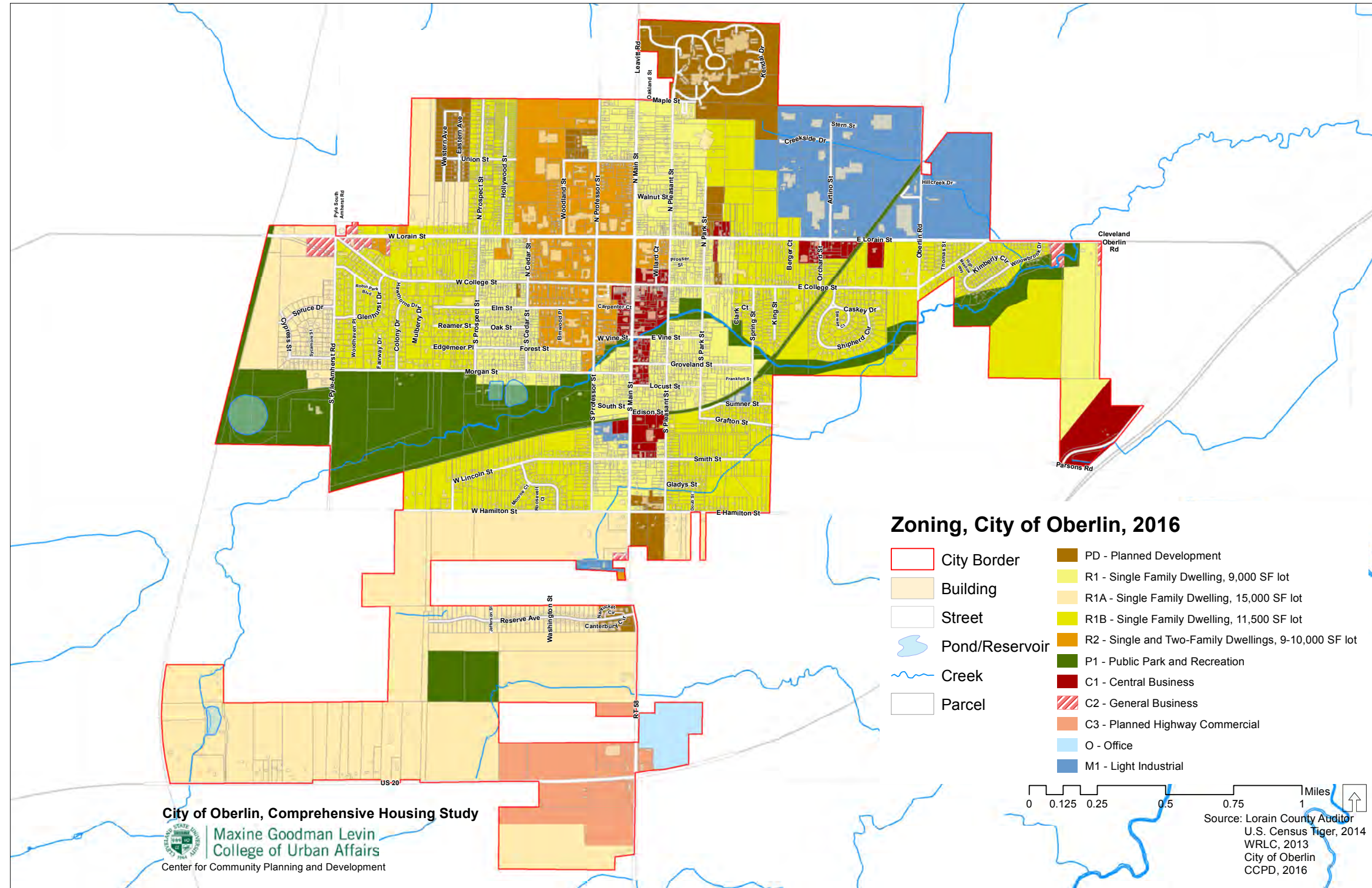
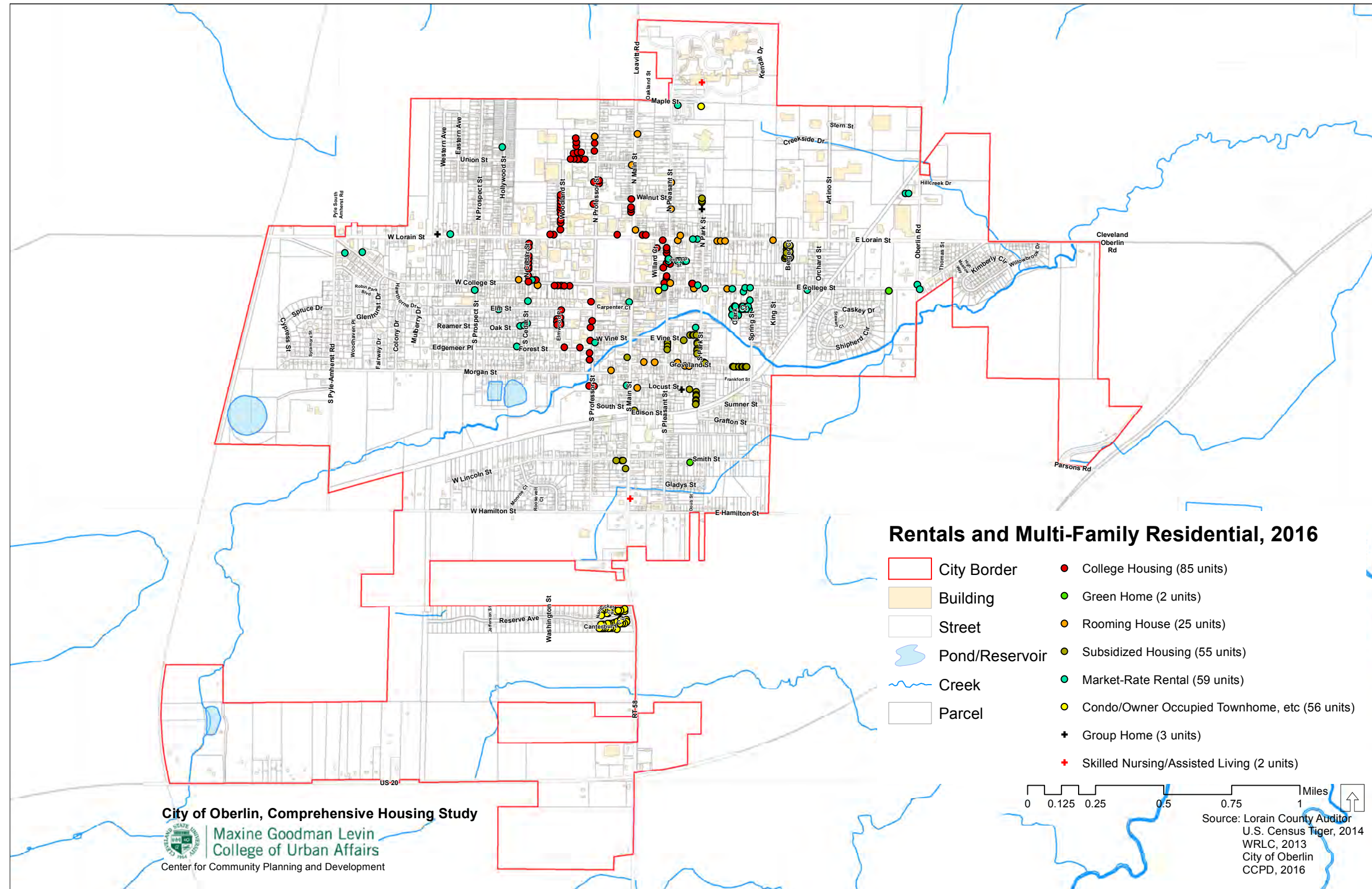


**OBERLIN COMPREHENSIVE HOUSING STUDY
OVERSIZED MAPS APPENDIX B - CHARACTERIZING OBERLIN'S HOUSING**

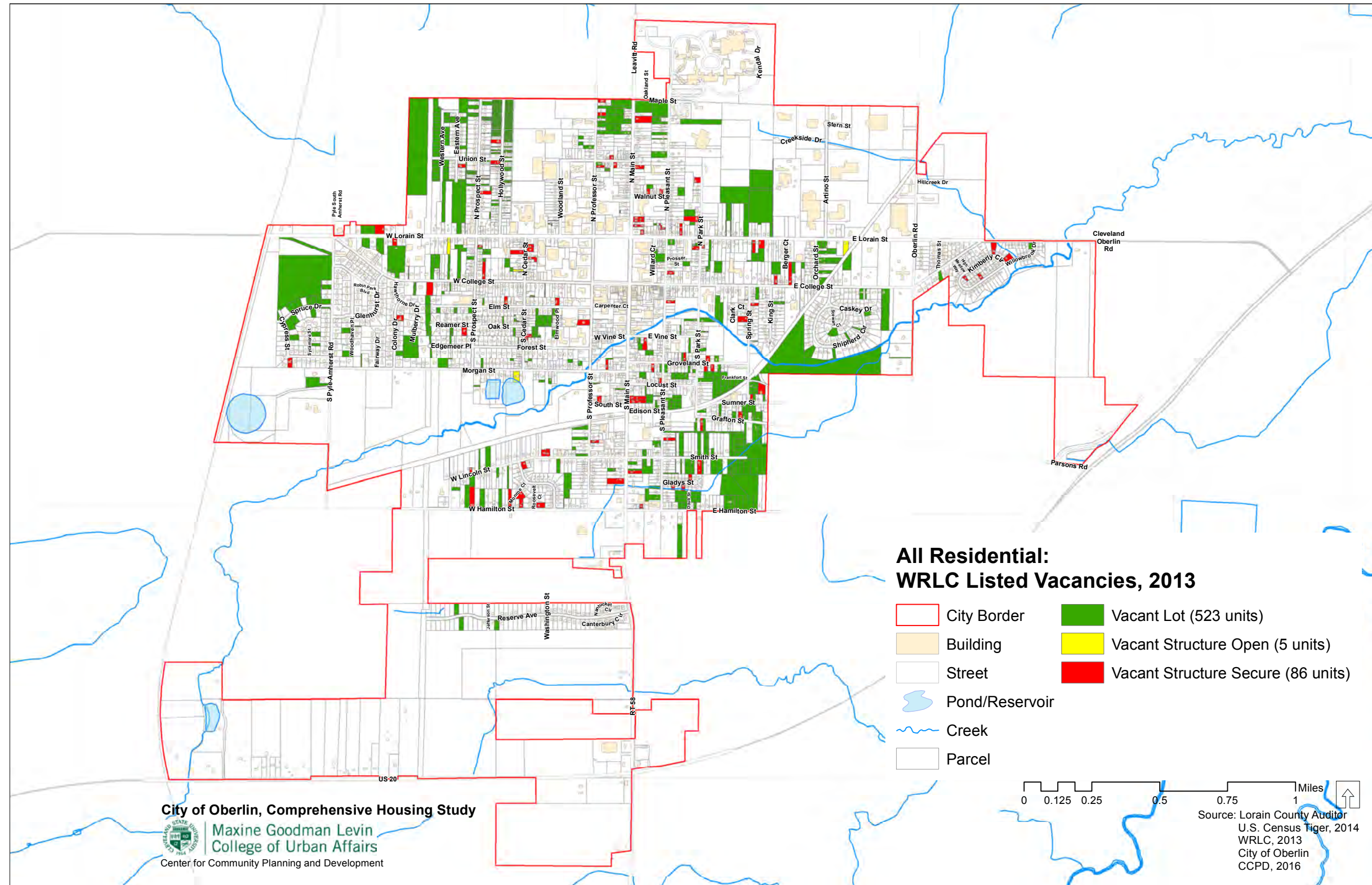
MAP B-1 ZONING



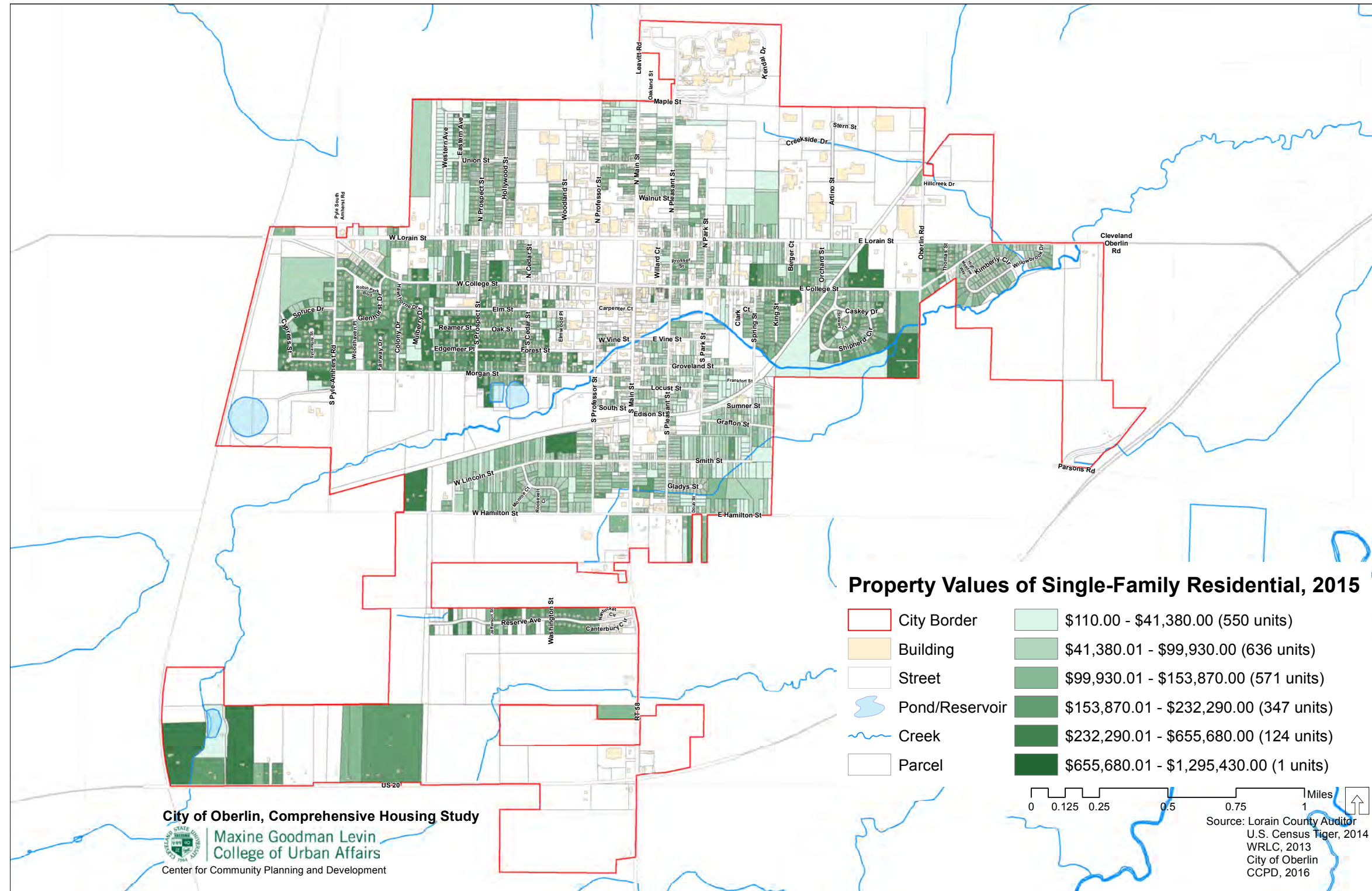
MAP B-2 MULTI-FAMILY INVENTORY



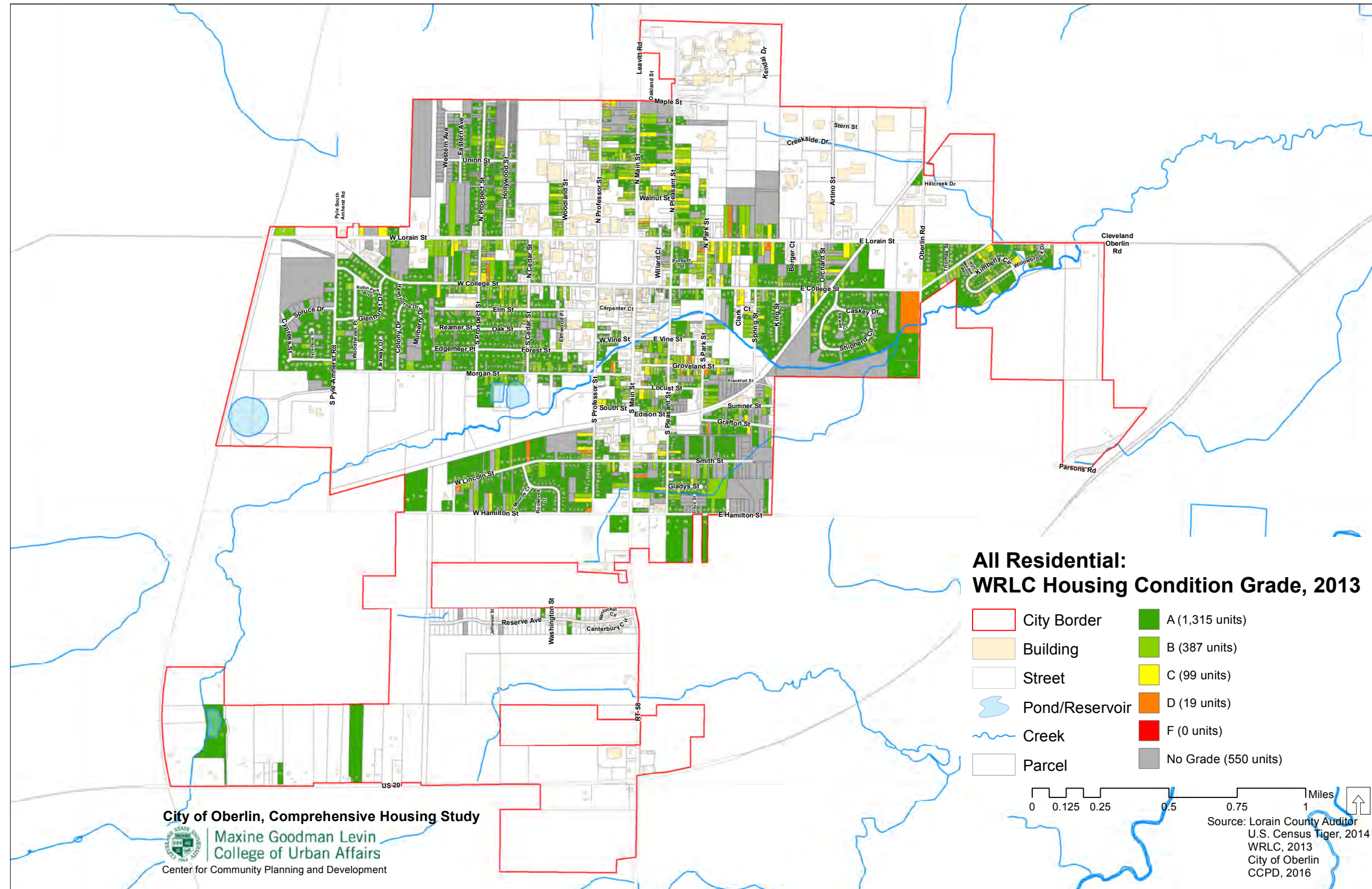
MAP B-3 WESTERN RESERVE LAND CONSERVANCY - VACANCY



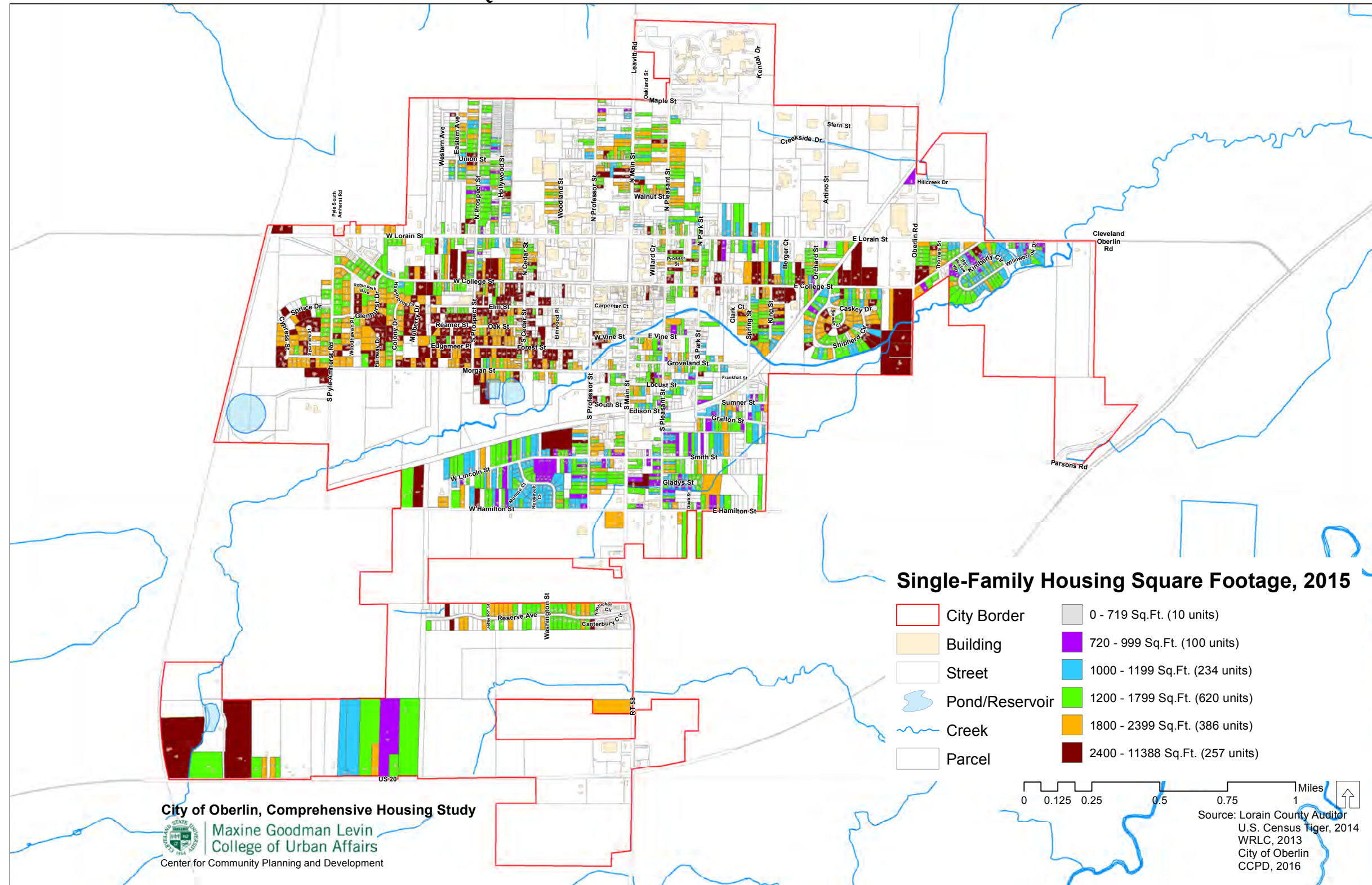
MAP B-4 SINGLE FAMILY RESIDENTIAL PROPERTY VALUE



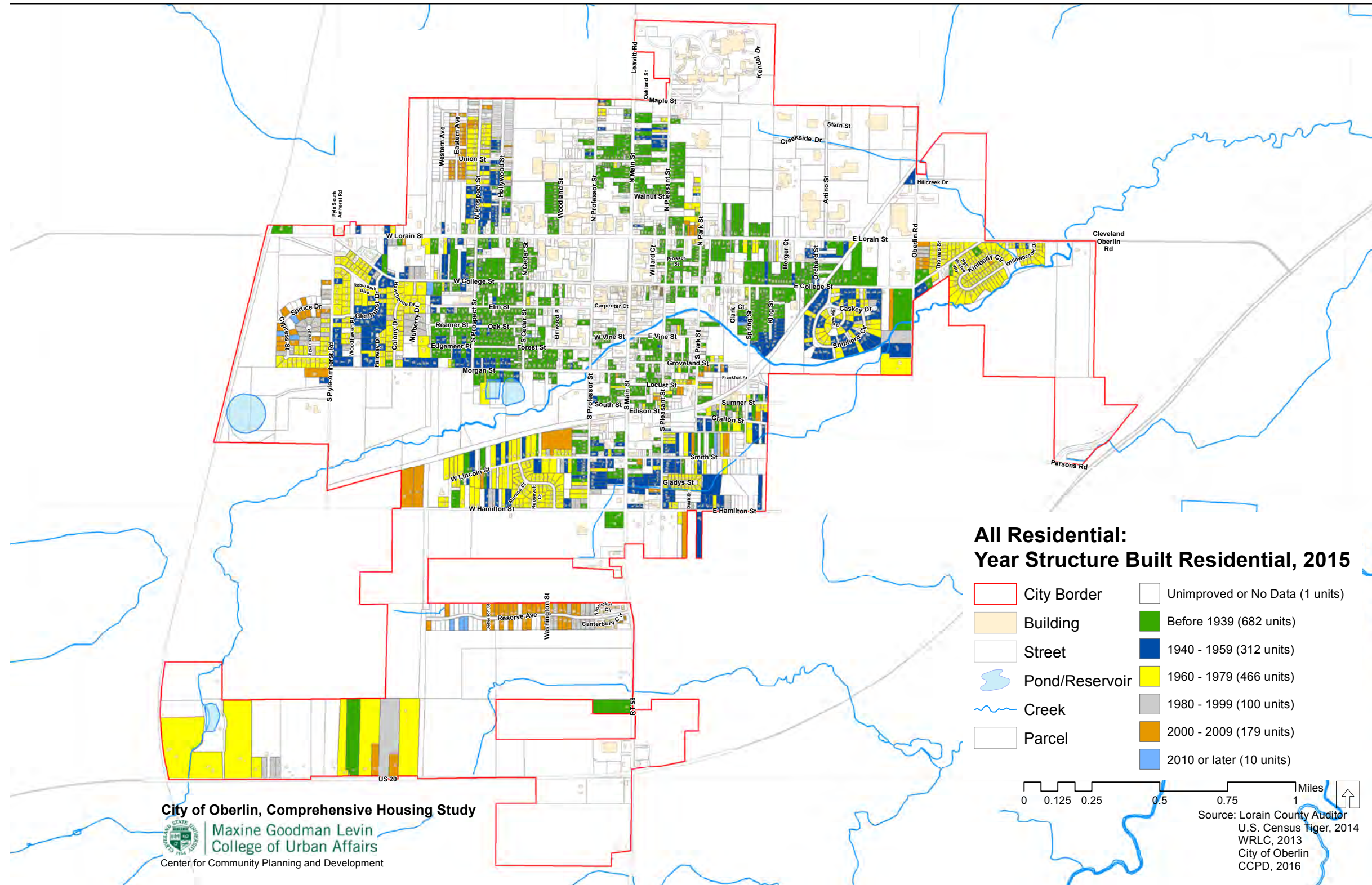
MAP B-5 WESTERN RESERVE LAND CONSERVANCY - RESIDENTIAL PROPERTY CONDITION



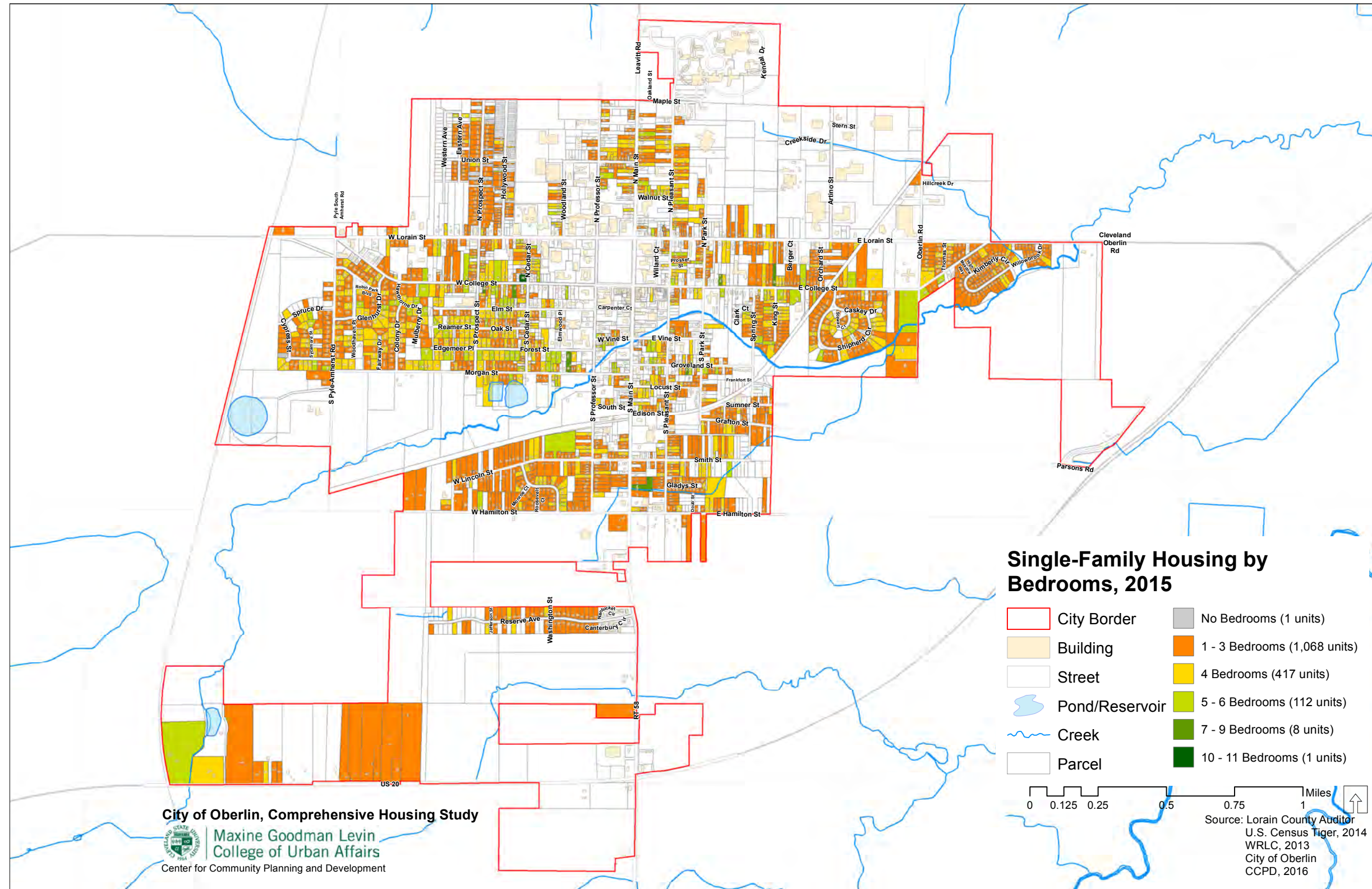
MAP B-6 SINGLE FAMILY RESIDENTIAL STRUCTURE SQUARE FOOTAGE



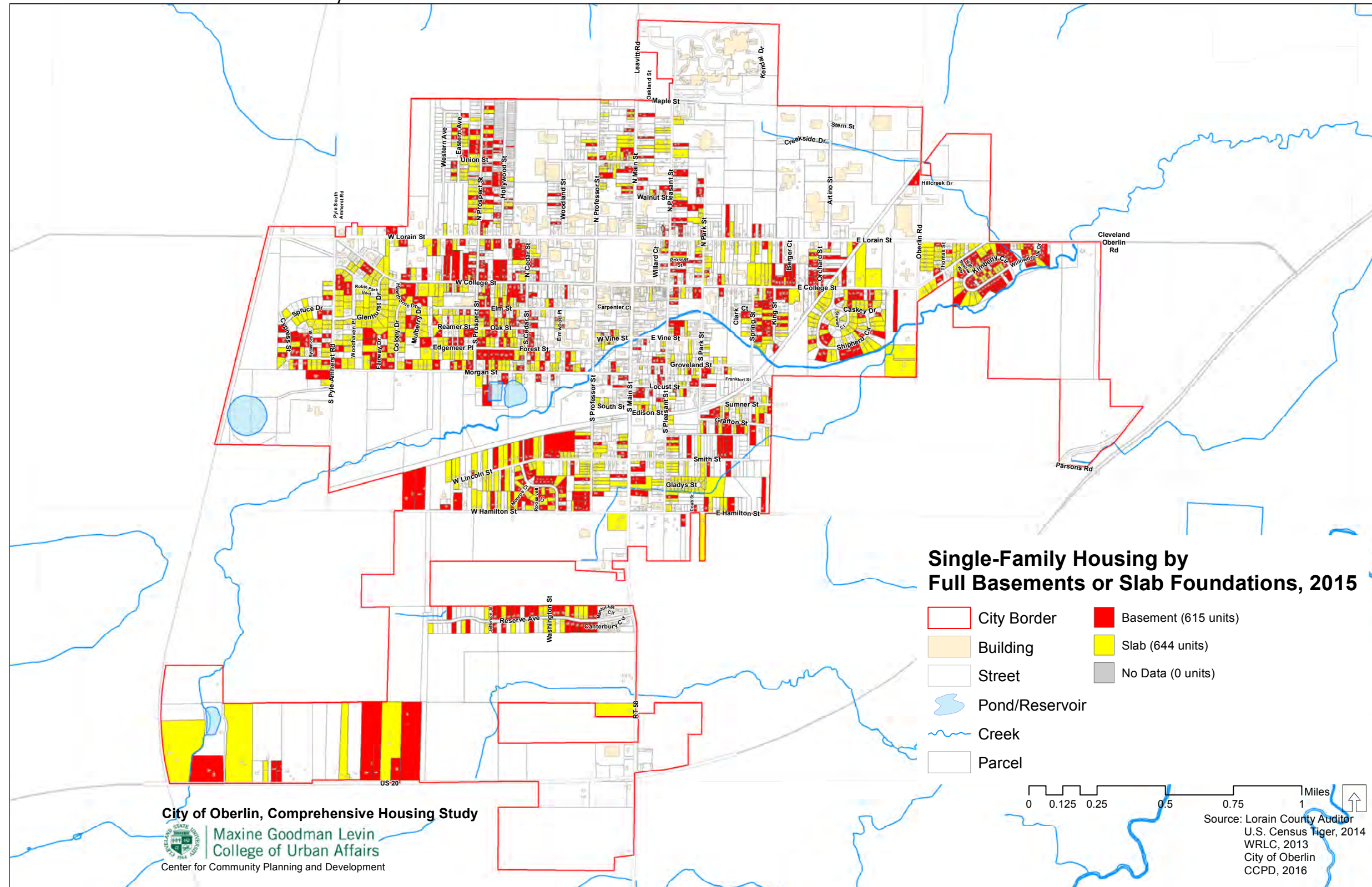
MAP B-7 RESIDENTIAL PROPERTY - YEAR BUILT



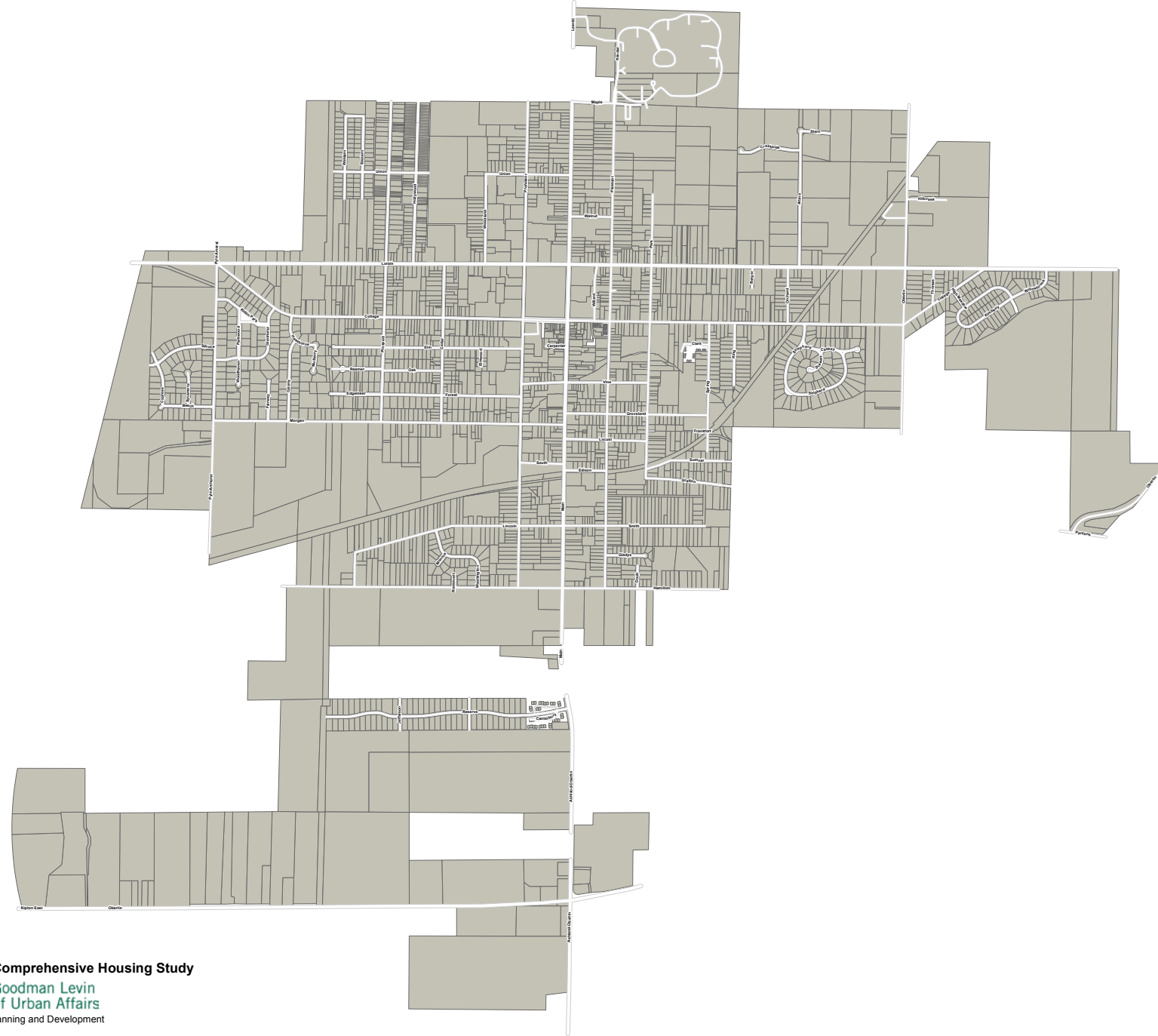
MAP B-8 NUMBER OF BEDROOMS



MAP B-9 SINGLE FAMILY BASEMENT/SLAB



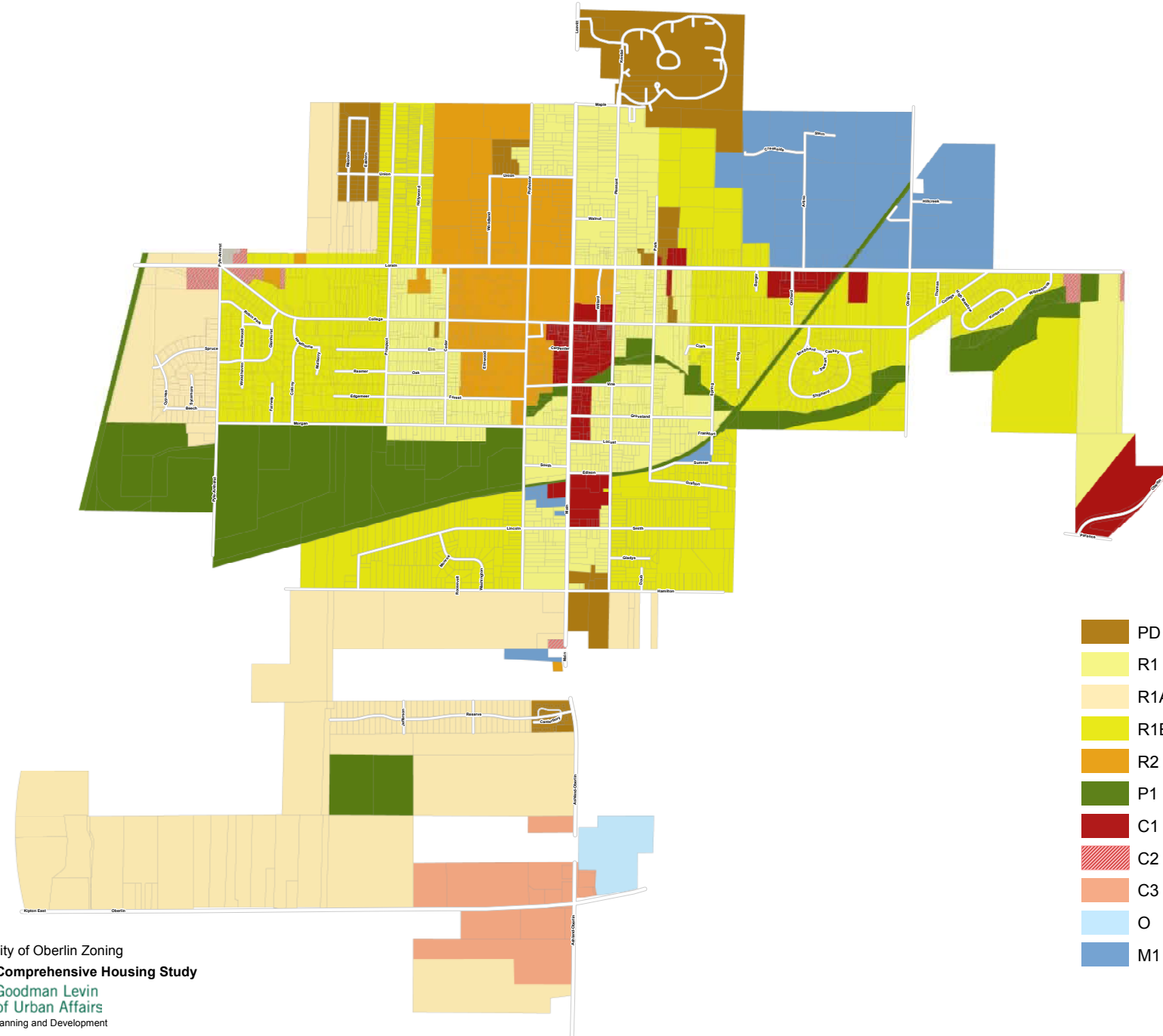
Where Do You Live?



Streetview Oberlin



What's Needed?



Source: City of Oberlin Zoning
City of Oberlin, Comprehensive Housing Study
Maxine Goodman Levin
College of Urban Affairs
Center for Community Planning and Development

Vision for the Future



**OBERLIN COMPREHENSIVE HOUSING STUDY
OVERSIZED TABLE APPENDIX E**

TABLE E-1 COMPARISON COLLEGE TOWNS SUMMARY

LOCATION	COLLEGE/UNIVERSITY	POPULATION	TOTAL HOUSING UNITS	Number of Students Enrolled	Total Households	Median HH income	Housing Unit Vacancy	Owner %	Group Quarters Pop	Pop Not in Group Quarters	Overall proportion of student population(1)	Overall proportion of students in households (1)	%WHITE;	%BLACK	%OTHER	proportion of seniors over 65	HUD entitled?
Oberlin, OH	Oberlin College	8,368	2,686	2,900	2,524	52,632	6.0%	58.3%	2,449	5,919	34.7%	7.6%	68.1%	17.7%	5.1%	14.4%	No
Burlington, VT	Champlain College, U of Vermont	42,342	16,828	12,264	16,337	42,745	2.9%	40.6%	6,916	35,426	29.0%	15.1%	87.3%	3.7%	6.3%	9.9%	
Middlebury, VT	Middlebury College	6,713	2,356	2,450	2,089	49,632	11.3%	50.4%	2,569	4,144	36.5%	-2.9%	89.8%	1.1%	5.8%	16.0%	No
Granville, OH	Denison University	5,646	1,582	2,150	1,466	101,814	7.3%	73.1%	1,885	3,761	38.1%	7.0%	90.7%	4.5%	3.0%	10.3%	
Ithaca, NY	Ithaca College, Cornell University	20,141	7,606	28,582	9,489	30,318	9.1%	27.5%	7,925	12,216	141.9%	169.1%	74.2%	5.7%	18.3%	13.3%	Yes
Wooster, OH	College of Wooster	26,119	11,885	2,058	10,639	41,143	10.5%	57.6%	2,876	23,243	7.9%	-3.5%	90.6%	4.1%	3.0%	17.3%	
Hanover, NH	Dartmouth College	11,311	3,278	6,298	1,936	76,719	9.9%	44.2%	4,141	7,170	55.7%	30.1%	85.2%	2.7%	10.9%	11.9%	No
Lexington, VA	Washington and Lee University	7,114	1,944	2,172	1,727	36,840	11.2%	54.2%	3,500	3,614	30.5%	-36.7%	84.7%	6.4%	5.2%	12.1%	
Gambier, OH	Kenyon College	2,226	399	1,600	319	55,417	20.1%	54.2%	1,617	609	71.9%	-2.8%	91.1%	3.5%	3.9%	5.8%	
Grinnell, IA	Grinnell College	9,136	3,874	1,600	3,541	45,079	8.6%	63.2%	1,509	7,627	17.5%	1.2%	90.6%	2.1%	5.5%	17.8%	
Amherst, MA	Amherst College	39,260	9,590	1,795	2,787	37,089	11.6%	38.8%	13,001	26,259	4.6%	-42.7%	78.7%	5.4%	13.2%	6.7%	
Lewisburg, PA	Bucknell University	5,781	2,047	3,660	1,842	46,326	10.0%	35.6%	2,336	3,445	63.3%	38.4%	92.2%	3.0%	4.0%	12.4%	
Northfield, MN	Olaf College, Carleton College	20,356	6,272	5,046	6,227	58,375	9.2%	68.6%	5,564	14,792	24.8%	-3.5%	98.1%	0.0%	1.9%	12.6%	
Decorah City, IA	Luther College	8,127	2,984	2,300	2,841	50,361	4.8%	64.7%	2,306	5,821	28.3%	-0.1%	96.3%	1.8%	0.9%	20.7%	
Montevallo City, AL	University of Montevallo	6,470	2,957	3,100	2,450	35,444	17.1%	55.8%	1,059	5,411	47.9%	37.7%	71.8%	25.8%	2.700%	12.0%	
Tuskegee City, AL	Tuskegee University	9,435	4,473	3,156	3,413	27,313	23.7%	46.5%	2,067	7,368	33.4%	14.8%	3.8%	94.8%	0.5%	12.9%	No
Williamstown, MA	Williams College	7,624	3,020	2,045	1,107	65,847	24.6%	66.6%	1,980	5,644	26.8%	1.2%	87.3%	2.5%	6.9%	21.0%	
Hamilton, NY	Colgate University	6,638	926	2,872	762	62,500	17.7%	60.0%	2,255	4,383	43.3%	14.1%	81.7%	9.5%	6.6%	8.4%	
Statesboro, GA	Georgia Southern University	29,630	11,614	20,459	10,127	22,196	12.8%	22.8%	5,140	24,490	69.0%	62.6%	52.3%	41.1%	4.0%	7.0%	
Greencastle, IN	Depauw University	10,307	3,714	2,264	3,049	41,365	17.9%	56.1%	2,863	7,444	22.0%	-8.0%	92.4%	2.5%	3.8%	13.3%	
Oxford, OH	Miami University	21,552	6,764	18,907	5,561	28,129	17.8%	31.5%	7,753	13,799	87.7%	80.8%	89.5%	3.1%	5.8%	6.4%	
Meadville, PA	Allegheny College	13,307	6,195	2,100	5,282	32,259	14.7%	46.3%	1,711	11,596	15.8%	3.4%	90.0%	5.7%	0.7%	15.0%	
Tiffin, OH	Tiffin University	17,835	7,588	4,282	6,635	39,530	12.6%	58.9%	1,989	15,846	24.0%	14.5%	93.5%	2.9%	2.0%	15.4%	
Grove City, PA	Grove City College	8,242	2,832	2,500	2,683	42,984	5.3%	54.8%	2,565	5,677	30.3%	-1.1%	96.0%	1.0%	1.6%	13.7%	No

Source: ACS 2010-2014 5-year estimate; city and college web sites; US HUD

Notes:

(1) Negative percents, or numbers over 100%, reflect college populations which are substantially housed outside city limits

(2) Green shading: cities chosen for case study review