

City of Oberlin Stormwater Utility



**City Council Work Session
May 7, 2018**



Stormwater Utility Purpose

To Establish A Dedicated Funding Source

- Water Quality
 - to meet USEPA and OEPA NPDES Phase II requirements to minimize storm water related pollution
- Water Quantity
 - to provide additional funding to enhance drainage systems and minimize flooding potential



Stormwater Utility Phase I Planning Study

April, 2013

- Establish a Technical Advisory Committee (TAC)
- Collect Appropriate Data
- Develop Stormwater Business Plan
- Perform level of service / cost of service analysis
- Mission Statement

“The City of Oberlin Stormwater Utility Program will provide stormwater management utilizing a cost effective, environmentally sound approach that meets or exceeds local, state and federal requirements for the protection of public health, private property and the natural environment in the Black River Watershed.”

Technical Advisory Committee

Don Romancak

Assistant Director

Lorain County Stormwater Management District



Mark Rufener, P.E.

Stormwater & GIS Manager



John Damico, MBA

President



Daniel Gardner, Kristin Brazunias, Heather Elmer

PUC Representatives

Eric Norenberg, Former CM

Rob Hillard, City Manager

Sal Talarico, Finance Director

Jeff Baumann, Public Works Director

Randall Roberts, City Engineer



Phase I Planning Study

Key Recommendations

October, 2014

- Proceed with Phase 2 to develop and implement a local stormwater utility program
- Establish the rate based on the ERU impervious area rate structure method
- Implement a rate consistent with the 5-Year Cash Flow Analysis
- Supplement General and Income Tax funds
- Explore partnership opportunities with Lorain County Stormwater District



Stormwater Utility

Phase II Scope of Work

February, 2015

Form Storm Water Advisory Committee (SWAC)

The SWAC combines the Technical Advisory Committee with representative community stakeholders:

- Council Representatives, formerly Scott Broadwell, now Kelley Singleton
- PUC Representative, Heather Elmer
- PUC Alternate and NACS Facilities Manager Ben Ryba
- David Hall, Oberlin City School District Superintendent
- Rey Carrion, Director of Facilities Services for Kendal at Oberlin
- Steve Varelmann, Oberlin College Architect
- Steve Fleming, General Plug & Manufacturing

The SWAC has met 11 times since June, 2016 to review, adapt and recommend the proposed **policies**, **budget** and **rates** for the Stormwater Utility



Stormwater Utility Policies & Procedures

- Billing & Collection System
 - SWAC/PUC recommend to bill/collect through the Lorain County Auditor
 - Parcel-based. vs. Meter-based. Saves ~\$335,000 over 5 years.
- Billing Policies
 - Single Family Residential
 - Non-Residential
- Equivalent Residential Unit (ERU) Determination
 - 3,600 SF basis
- Total number of ERUs: 5,035
 - 1,829 Residential Units; 3,206 Non-Residential Units

Stormwater Utility

Budget Analysis – Current Expenses

City of Oberlin Current Level of Service					
Category	Admin	Permit Compliance	Maintenance	Capital	Total
Water Quality	\$7,511.05	\$107,180.08	\$0.00	\$47,076.50	\$161,767.63
Water Quantity	\$4,288.05	\$0.00	\$115,904.25	\$115,849.05	\$236,041.35
TOTAL:	\$11,799.10	\$107,180.08	\$115,904.25	\$162,925.55	\$397,808.98

The **Current Level of Service** analysis established the City's baseline costs for storm-water related work. These costs were developed and calculated based on the City's actual personnel, operating and capital costs.

Stormwater System Inventory

Pipe Size	Lineal Feet	Miles		Drainage Ways	Lineal Feet	Miles
6"	534	0.101		Plum Creek	21,221	4.019
8"	8,380	1.587		Evans Creek	9,870	1.869
10"	16,849	3.191		Hill Creek	8,115	1.537
12"	51,343	9.724		Waterways Subtotal:	39,206	7.425
15"	32,493	6.154				
18"	13,964	2.645		Hamilton Rd. ditches	5,753	1.090
20"	2,982	0.565		Hill Creek Dr. ditches	1,068	0.202
21"	1,989	0.377		Bike Path ditches	28,236	5.348
24"	9,418	1.784		Ditches Subtotal:	35,057	6.640
24"x36"	640	0.121		DRAINAGE WAYS TOTAL:	74,263	14.065
27"	520	0.098				
30"	3,283	0.622		Structures	Number	
36"	8,586	1.626		Catch Basins	865	
48"	5,311	1.006		Manholes	540	
54"	530	0.100				
60"	883	0.167			Lineal Feet	Miles
TOTAL:	157,705	29.868		Streets	154,490	29.259

Stormwater Utility

Budget Analysis – Anticipated Expenses

City of Oberlin Additional Required Level of Service					
Category	Admin	Permit Compliance	Maintenance	Capital	Total
Water Quality	\$42,363.49	\$115,600.73	\$0.00	\$28,750.00	\$186,714.22
Water Quantity	\$6,082.90	\$0.00	\$74,216.80	\$62,350.00	\$142,649.70
TOTAL:	\$48,446.39	\$115,600.73	\$74,216.80	\$91,100.00	\$329,363.92

Additional services necessary to bring the City into full compliance with OEPA NPDES permit requirements, to fund capital projects to improve drainage and alleviate flooding at an accelerated rate and to repay the Lorain County Storm Water District for their advances to develop a local stormwater utility.



Stormwater Utility Water Quality Expenses

Permit Compliance

- Public Education and Public Involvement
- Illicit Discharge Detection and Elimination
- Construction Site Sediment and Erosion Control
- Post-Construction Storm Water Control
- Pollution Prevention & Good Housekeeping
 - Facility SWPPP
 - Enhanced Inspection, Cleaning & Maintenance
 - Equipment Reserve
- Administration
 - Repayment of LCSWD Advance



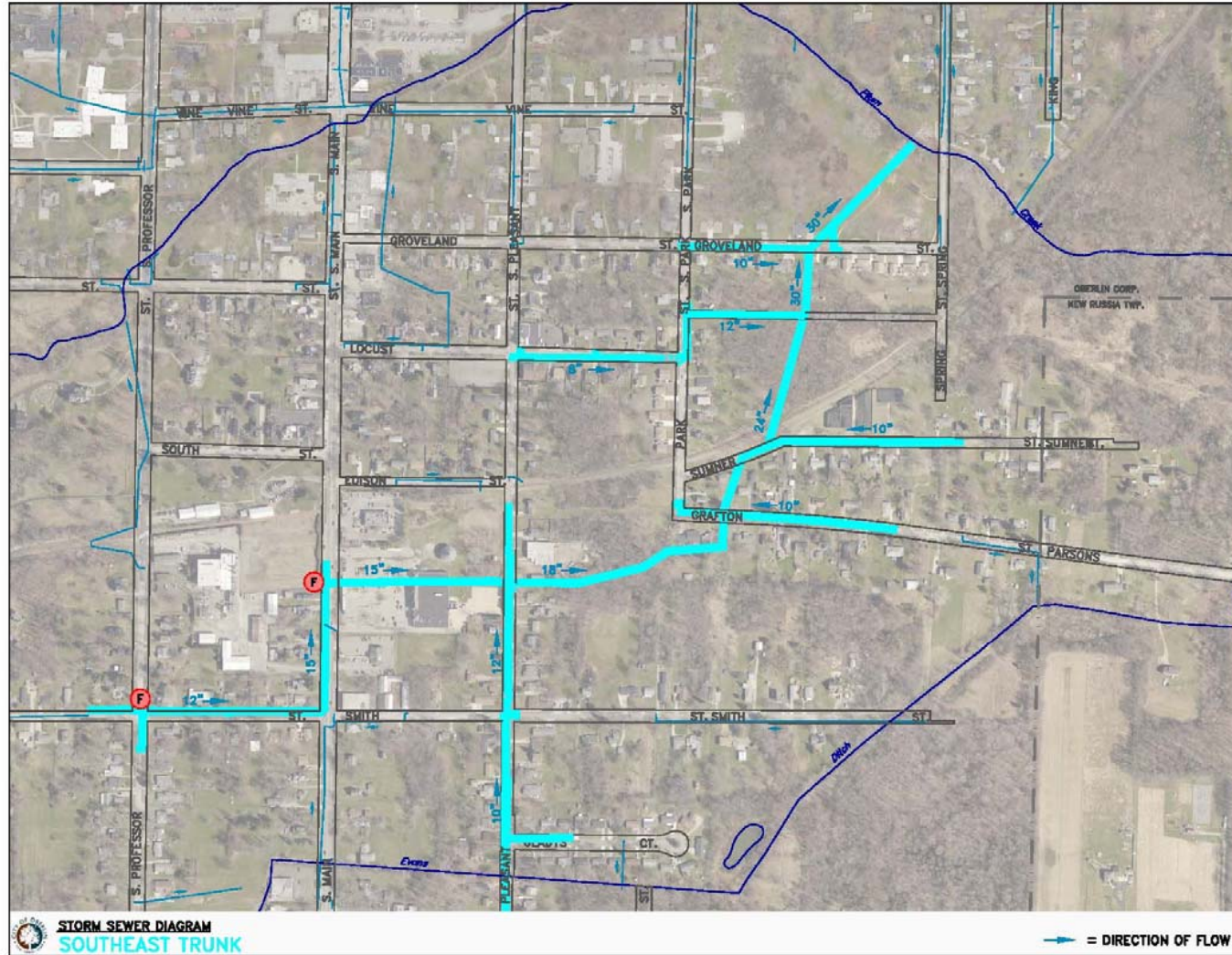
Stormwater Utility

Water Quantity Expenses

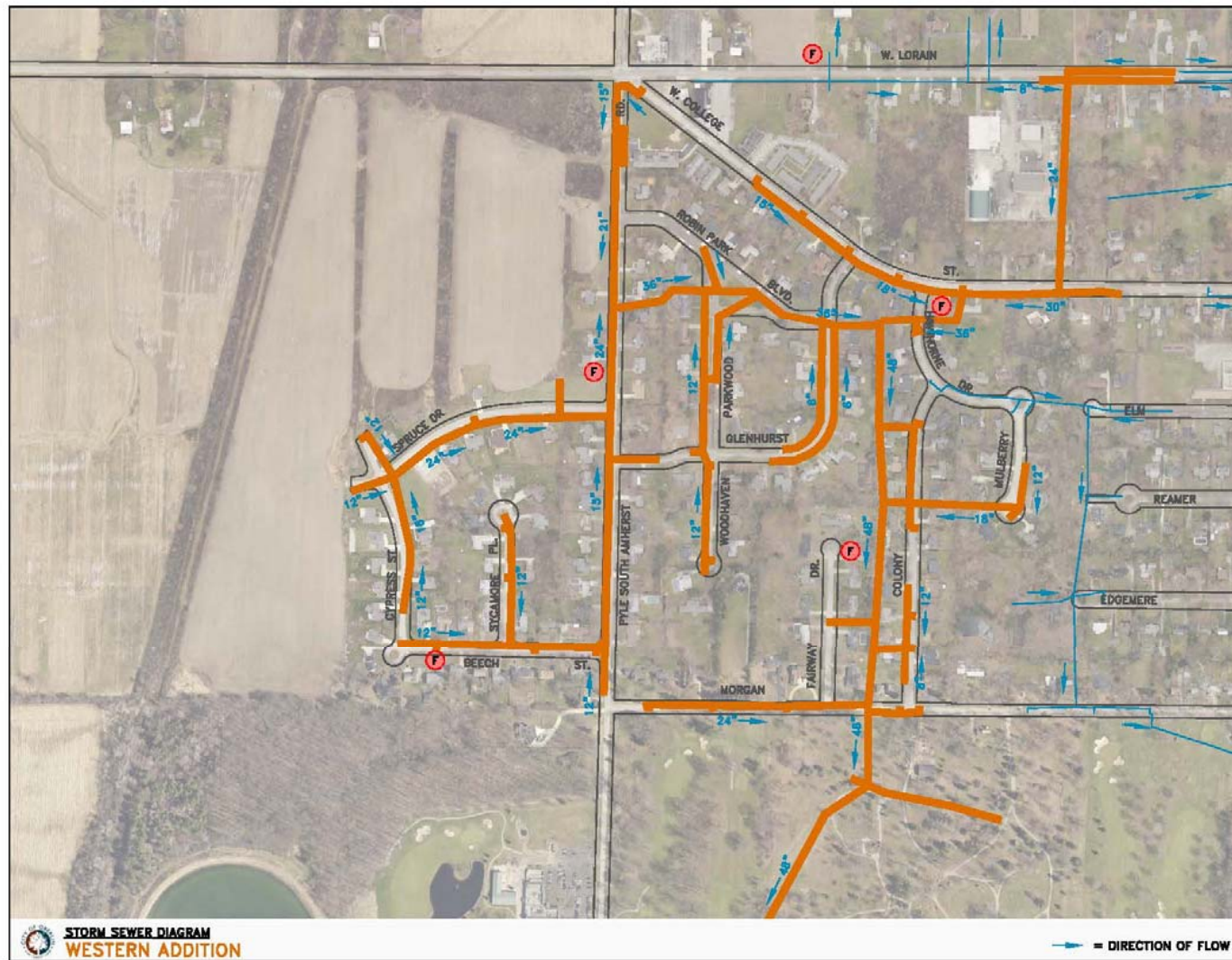
Drainage Improvements & Flood Prevention

- Storm Sewer Inspection, Repair & Installation
- Equipment Reserve
- Storm Water Master Plan
- Capital Improvement Projects
- Additional Staffing (1.5 FTE)
 - Storm Water Manager
 - Collection Operator

Southeast Trunk Storm Sewer



'Western Addition' Storm Sewer



Stormwater Utility Budget

City of Oberlin Adjusted Total Required Level of Service					
Category	Admin	Permit Compliance	Maintenance	Capital	Total
Water Quality	\$59,810.08	\$260,842.65	\$0.00	\$87,872.05	\$408,524.78
Water Quantity	\$12,203.01	\$0.00	\$220,505.98	\$206,059.65	\$438,768.64
TOTAL:	\$72,013.09	\$260,842.65	\$220,505.98	\$293,931.70	\$847,293.42

This chart combines the Current and Additional Required Level of Service tables and adjusts for uncollected charges, inflation at 2.5%/year and the 5% General Fund Administrative charge.

Stormwater Utility Rate Setting

Expenses vs. Revenues

- 5-year annual average expense of \$847,293.42
- With 5,035 ERUs, each \$1 per month charge generates \$60,420 in annual stormwater revenue.
- If stormwater rates were set to cover all of the costs associated with the Storm Water Utility, the rate would need to be \$14.02/month.
- Local Stormwater Utility Rate Comparisons

Local Stormwater Utility Rates

Community	Monthly Base Rate
Elyria	\$2.65
Lorain County	\$3.09
Sheffield Village	\$3.50
New London	\$4.00
Sheffield Lake	\$4.85
LaGrange	\$5.00
Vermilion	\$5.50
Wooster	\$5.75
Wellington	\$6.00
Lorain	\$7.00

Stormwater Utility Rate Setting

- To set a reasonable rate, the SWAC recommends that the City continue to fund the Current Level of Service through annual transfers from the General Fund and/or the Income Tax Capital Fund
- The annual General Fund/Income Tax Capital Fund cost = \$448,060

RATE RECOMMENDATION

	ERU	Annual	Estimated
Year	Rate	Charge	Fee Revenue
2019	\$4.25	\$51.00	\$256,510.92
2020	\$4.39	\$52.68	\$265,225.08
2021	\$5.41	\$64.92	\$326,667.73
2022	\$6.28	\$75.36	\$379,686.71
2023	\$6.61	\$79.32	\$399,109.89

Ordinance Overview

- ORD 18-29: PUC Oversight
- ORD 18-30: Create Stormwater Enterprise Fund
- ORD 18-31: Set 5% Administrative Charge
- ORD 18-32: Join Lorain County Stormwater District
- ORD 18-33: Chapter 916 Municipal Stormwater Utility
- ORD 18-34: Set the Stormwater Utility Rate

Stormwater Utility Next Steps

- Council Review
- Public Education
 - Direct mailing to all customers
 - Select mailing to largest customers
 - FAQ
- County Filing Deadline for Billing is September, 2018
- First Property Tax Bills w/Storm Water Charges, January, 2019

Questions & Open Discussion

