

SR-58 South Active Transportation Improvements





Active Transportation Priority Projects

June, 2021

Project Description	2022				2023				2024				2025				2026			
	Q1	Q2	Q3	Q4	Q1	Q2	Q3	Q4	Q1	Q2	Q3	Q4	Q1	Q2	Q3	Q4	Q1	Q2	Q3	Q4
North Park to School East Multi-use Trail	\$249,000				→ in design															
South Main & East Hamilton Sidewalk	\$124,911 (complete)																			
SR58 South, Hamilton to US20 to Walmart Drive									\$717,566											
All Safe Routes To School projects													\$639,688							
SR58 North, Maple to Butternut																	\$347,167			

SR-58 South Active Transportation Improvements Project Development History

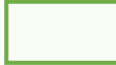

- October, 2022. Following City Council's 2023 budget planning meeting, City Manager Hillard directs Public Works staff to proceed w/ QBS process for design services for SR58 Active Transportation Improvements
- December, 2022. Letter of Interest returned by (7) firms
- January, 2023. Staff scoring completed; negotiations begin w/ 1st ranked firm
- May 2, 2023. Negotiations conclude unsuccessfully w/ top firm (\$354,900+)
- May 24, 2023. Contract negotiations complete w/ 2nd ranked firm
- June 5, 2023. By Ordinance 23-46, City Council awards \$197,070 contract to the Environmental Design Group

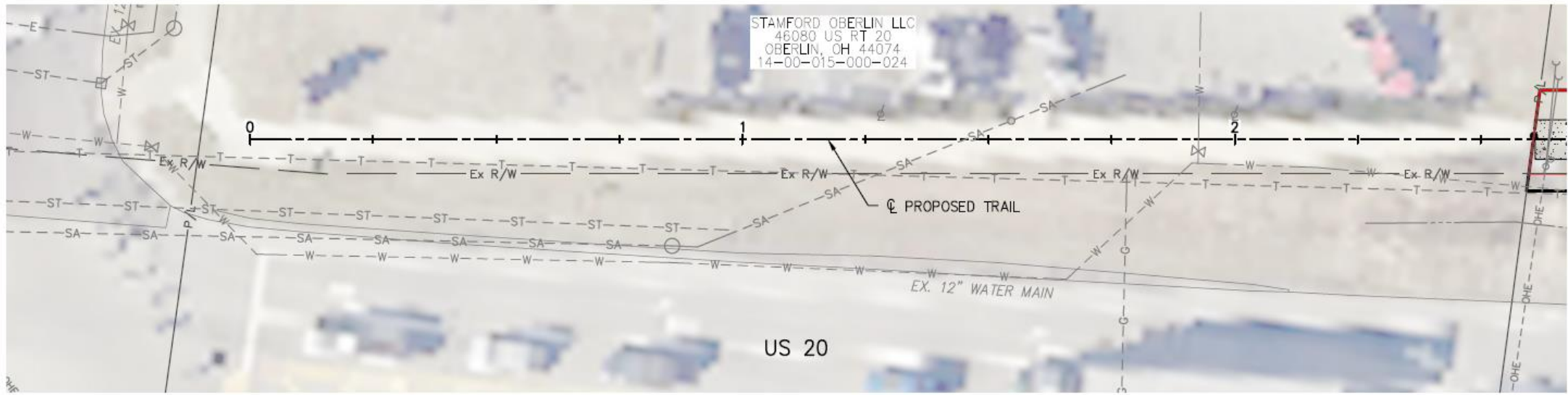
SR-58 Active Transportation Improvements Project Design Status

- Basemapping. Center-line, right-of-way, property lines, utilities, signs, landscape features, encroachments, topography.
- GeoTechnical Investigation and Report.
- Wetlands Delineation and Report.
- Preliminary Design.
- Engineering Review with ODOT.
- 50% plan development.
- Parcel-based preliminary easement exhibits for owner outreach.
- 24 adjoining parcels (3 city-owned) with 18 owners.
- Permanent easements required on (6) parcels; temporary easements on (18) parcels. Owner outreach in process.

Overall Project Limits

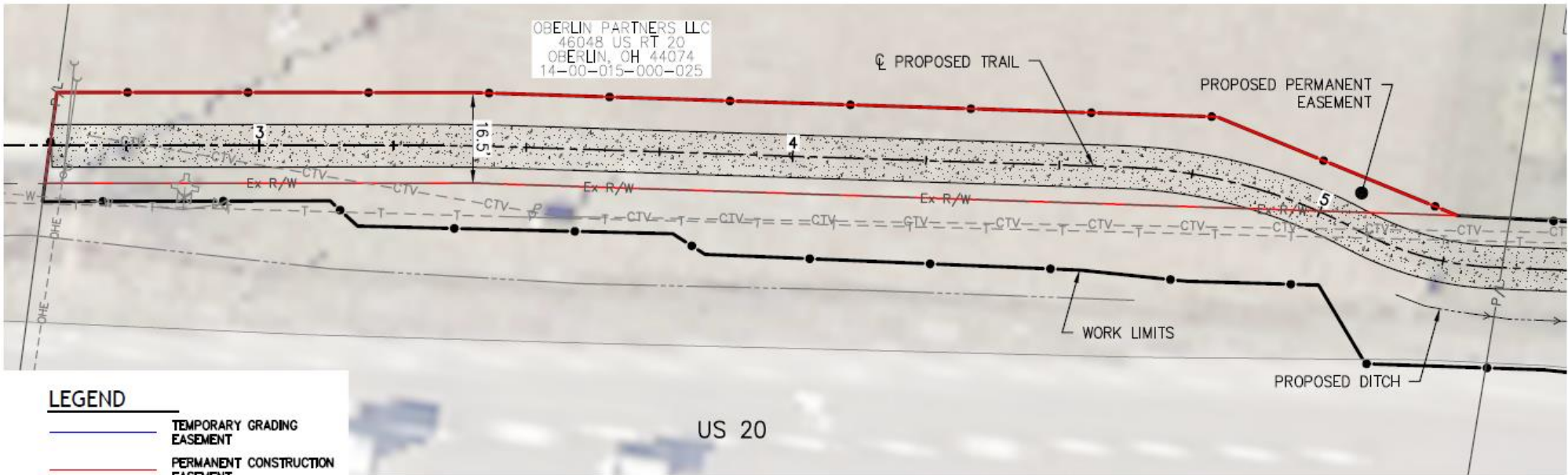


-  Oberlin Corp Limit
-  Proposed Path



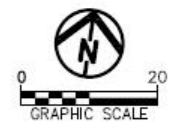
STAMFORD OBERLIN LLC
 46080 US RT 20
 OBERLIN, OH 44074
 14-00-015-000-024

US 20





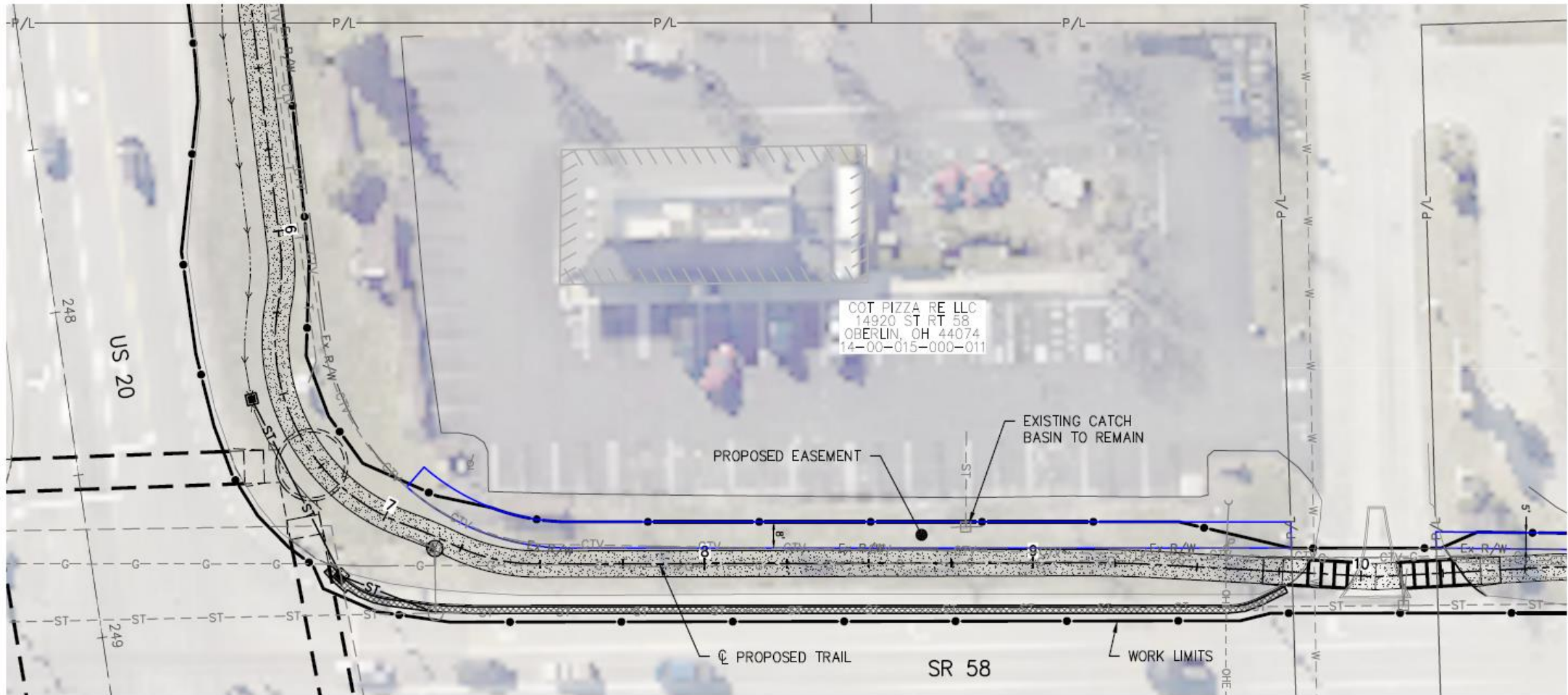
OBERLIN PARTNERS LLC
 46048 US RT 20
 OBERLIN, OH 44074
 14-00-015-000-025

US 20



LEGEND

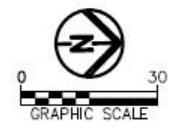
	TEMPORARY GRADING EASEMENT
	PERMANENT CONSTRUCTION EASEMENT



COT PIZZA RE LLC
 14920 ST RT 58
 OBERLIN, OH 44074
 14-00-015-000-011

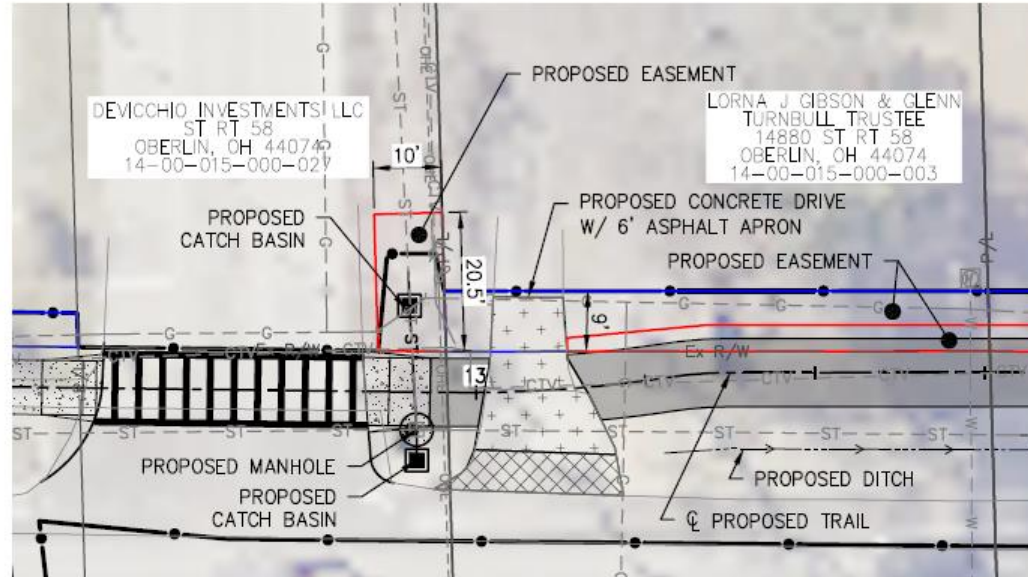
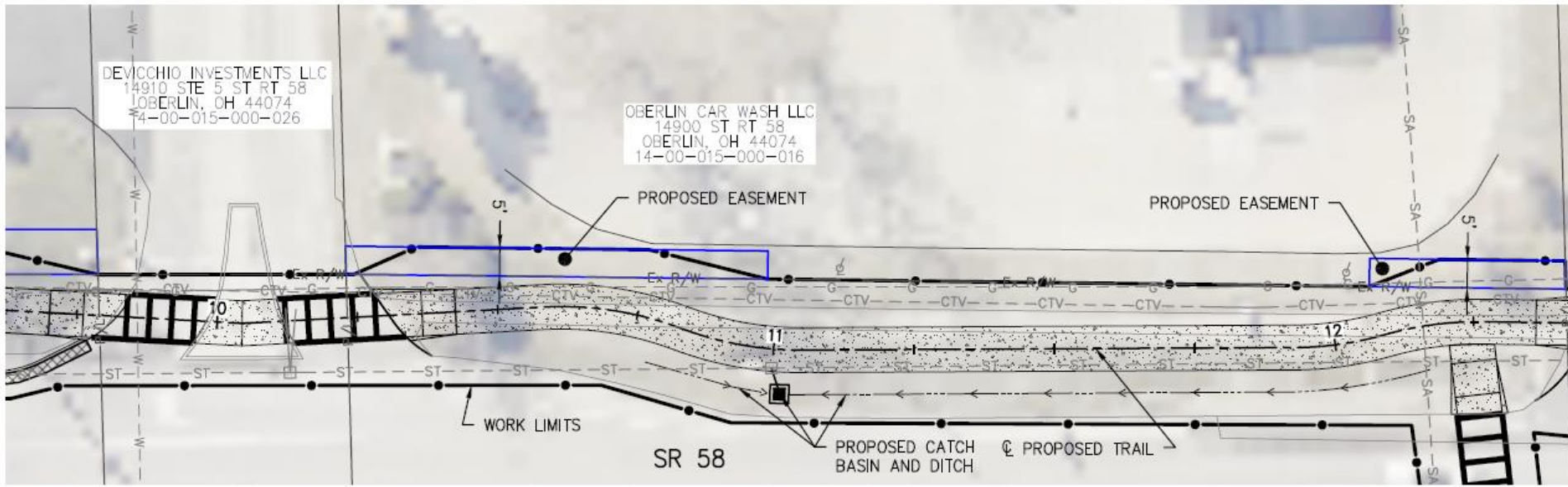
LEGEND

- TEMPORARY GRADING EASEMENT
- PERMANENT CONSTRUCTION EASEMENT

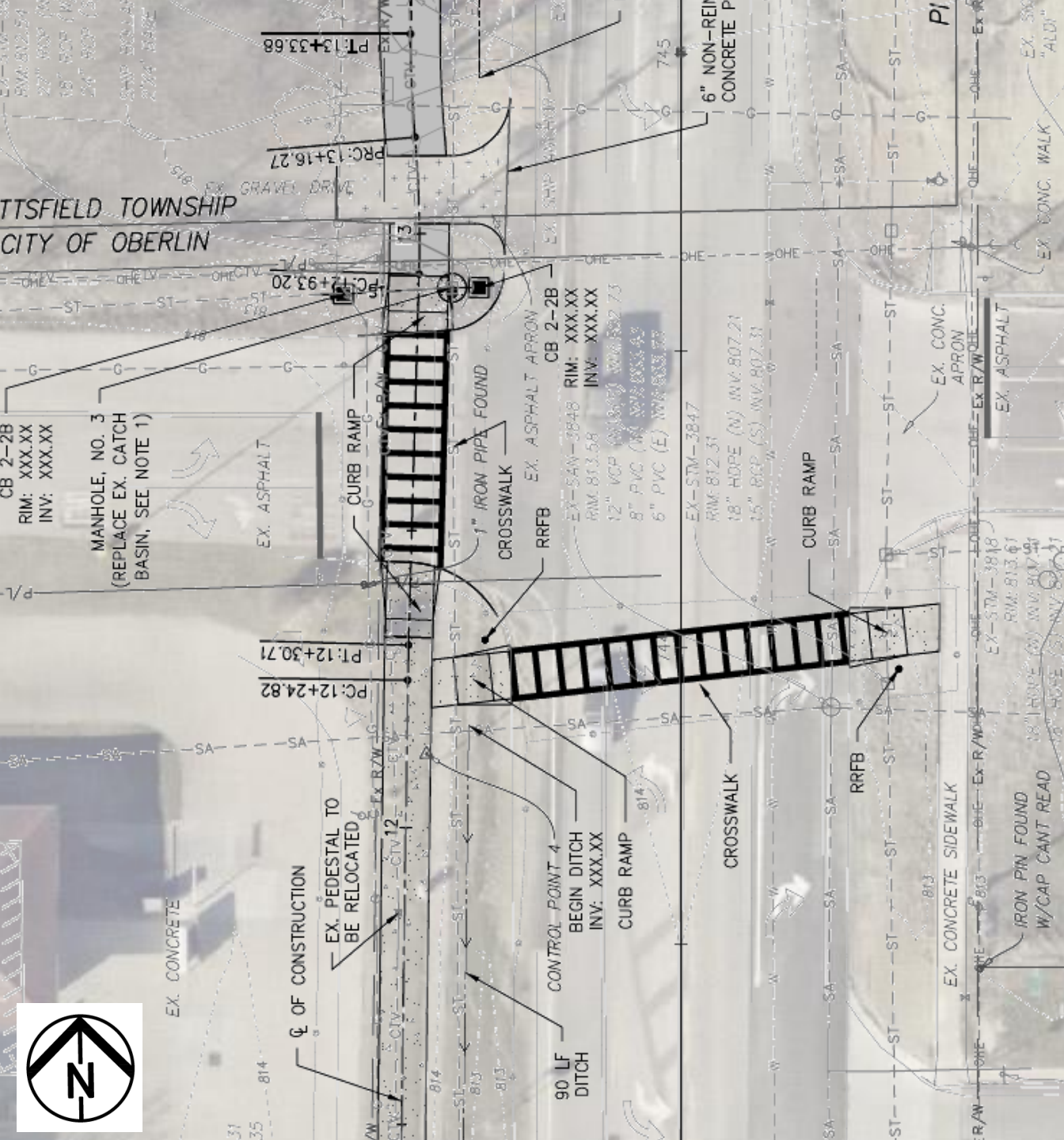


Environmental Design Group
 AKRON / CLEVELAND / COLUMBUS
 HQ 480 GRANT ST., AKRON, OH 44311
 P 330.375.1390 / TF 800.836.1390
 W ENVDESIGNGROUP.COM

SR 58 ACTIVE TRANSPORTATION IMPROVEMENTS
CITY OF OBERLIN
 PROPOSED EASEMENT EXHIBIT
 JANUARY 31, 2024



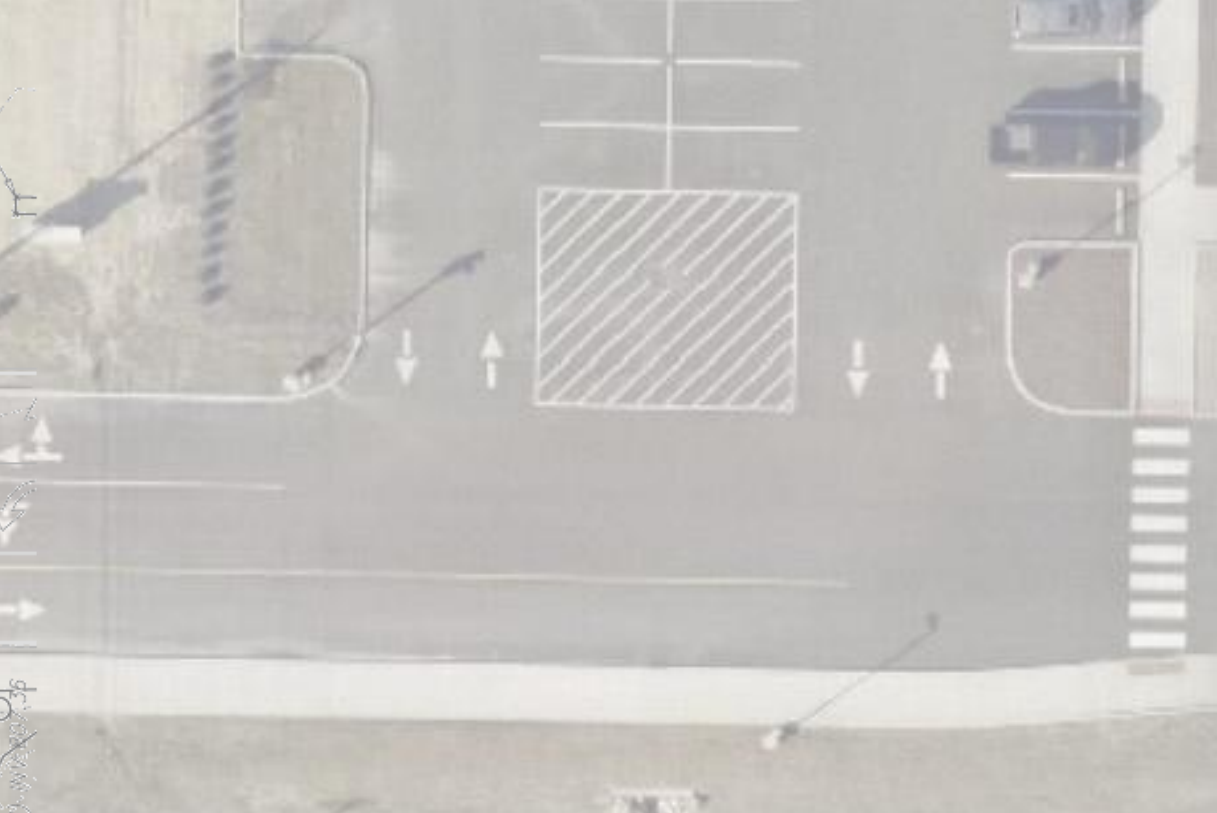
- LEGEND**
- TEMPORARY GRADING EASEMENT
 - PERMANENT CONSTRUCTION EASEMENT

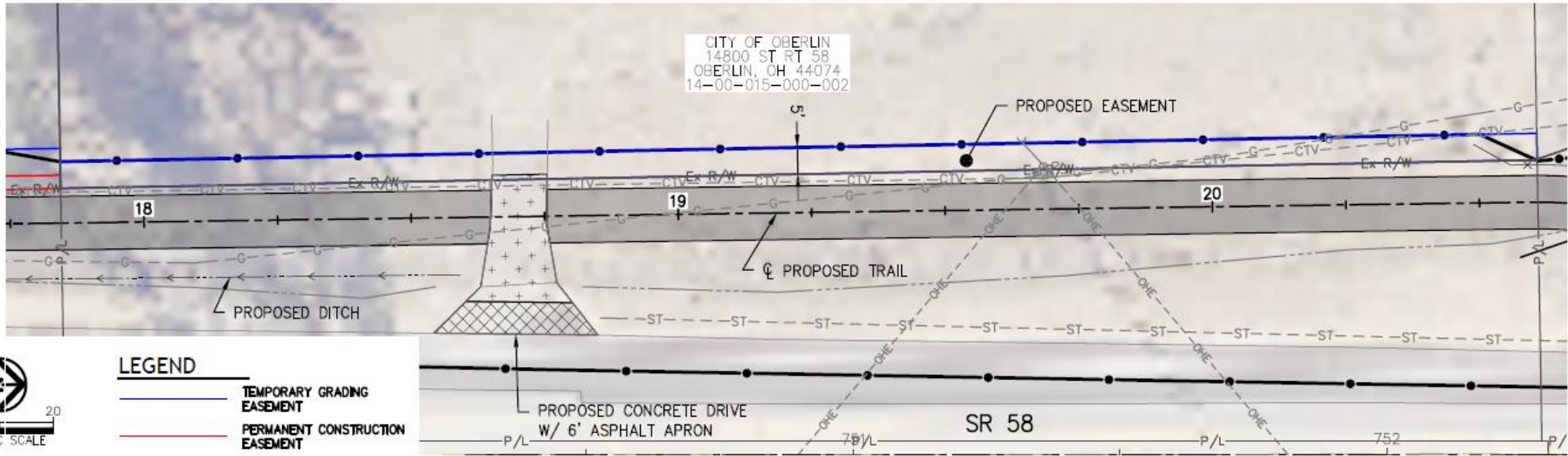
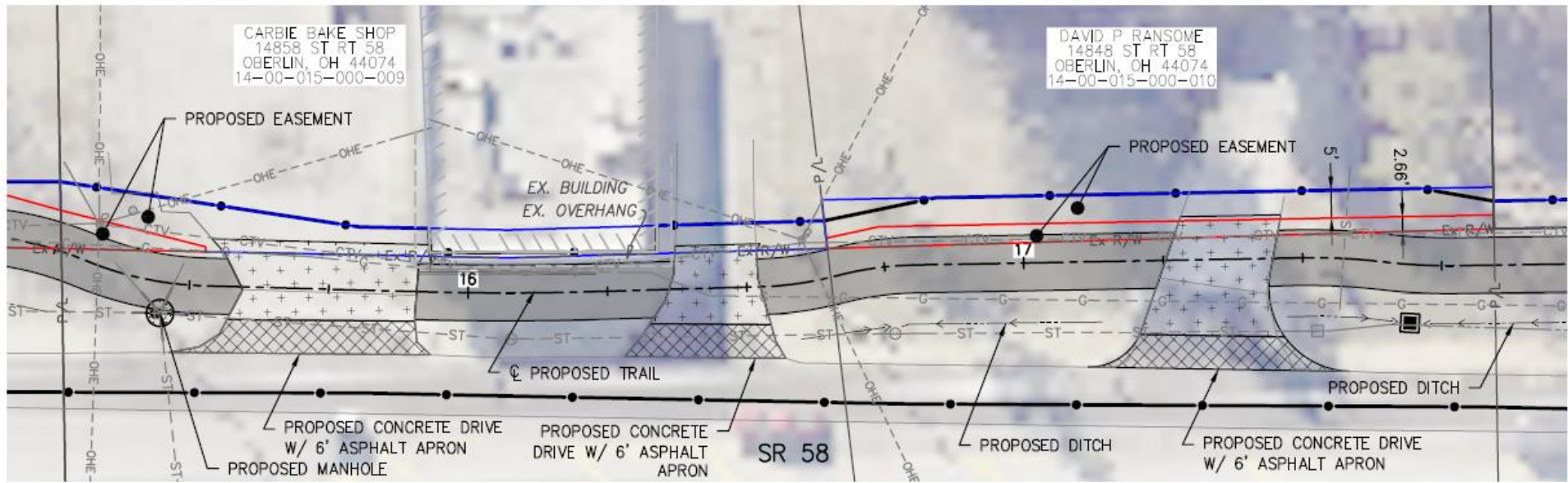


Oberlin Crossing

Crosswalk at Aldi

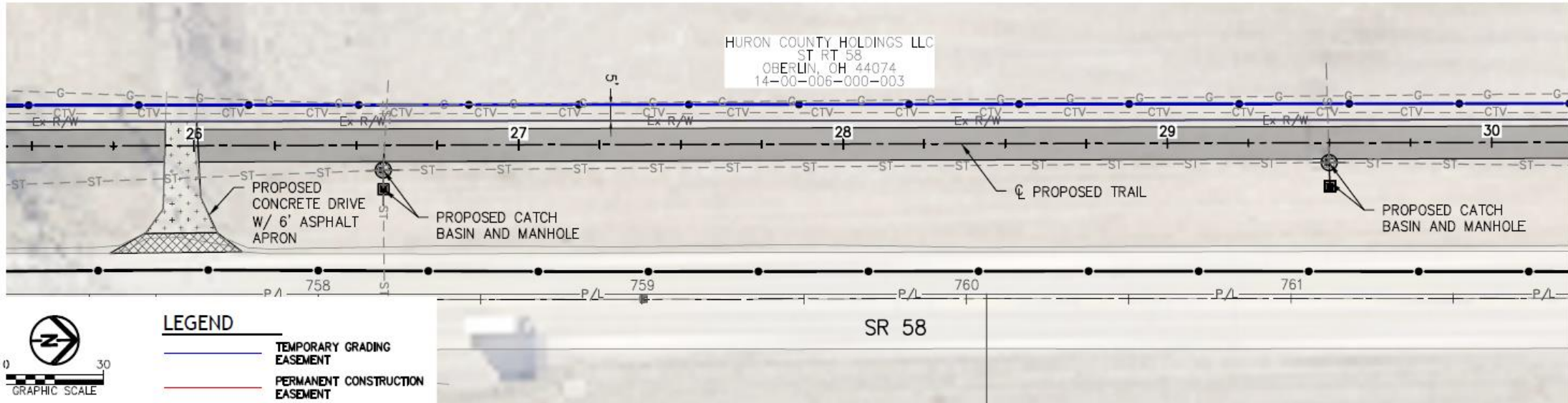
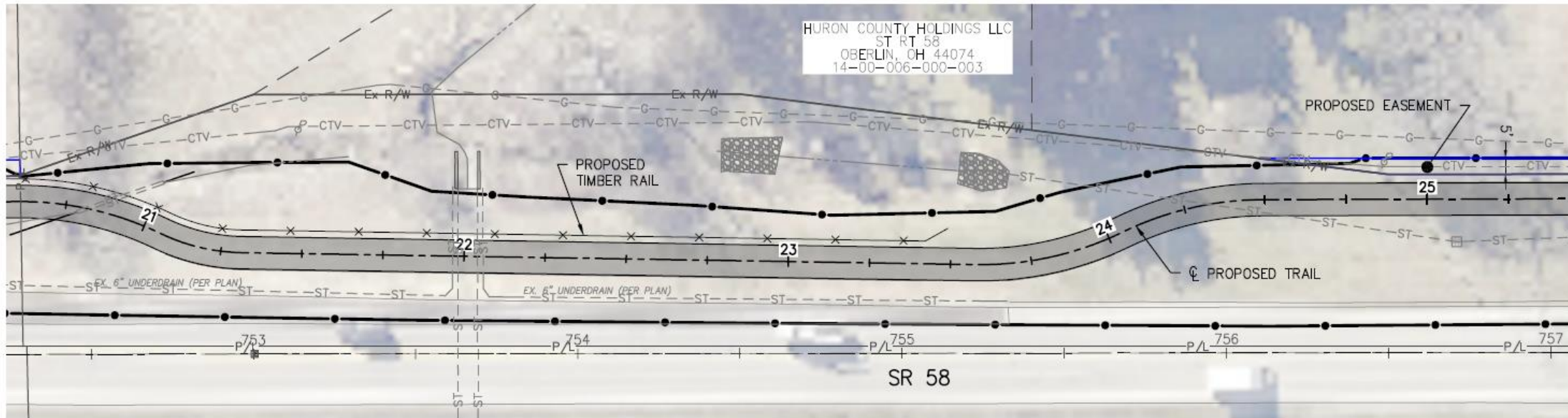
- Completes pedestrian connection to Aldi and Auto Parts store.
- Short gap in sidewalk to gas station.
- Pushbutton actuated RRFB pedestrian crossing signs to cross SR-58





LEGEND

- TEMPORARY GRADING EASEMENT
- PERMANENT CONSTRUCTION EASEMENT



- LEGEND**
- TEMPORARY GRADING EASEMENT
 - PERMANENT CONSTRUCTION EASEMENT

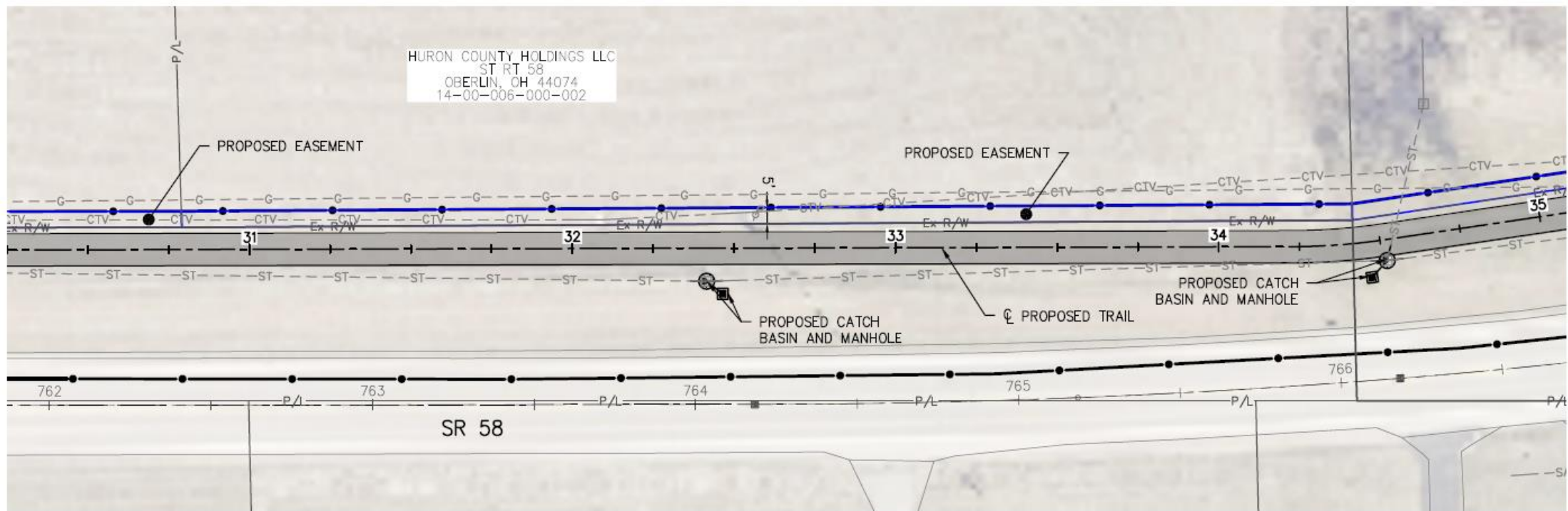
HURON COUNTY HOLDINGS LLC
 ST RT 58
 OBERLIN, OH 44074
 14-00-006-000-003

HURON COUNTY HOLDINGS LLC
 ST RT 58
 OBERLIN, OH 44074
 14-00-006-000-003



Environmental Design Group
 AKRON / CLEVELAND / COLUMBUS
 HQ 480 GRANT ST., AKRON, OH 44311
 P 330.375.1390 / TF 800.836.1390
 W ENVDESIGNGROUP.COM

SR 58 ACTIVE TRANSPORTATION IMPROVEMENTS
CITY OF OBERLIN
 PROPOSED EASEMENT EXHIBIT
 JANUARY 31, 2024

HURON COUNTY HOLDINGS LLC
 ST RT 58
 OBERLIN, OH 44074
 14-00-006-000-002

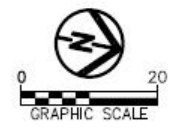
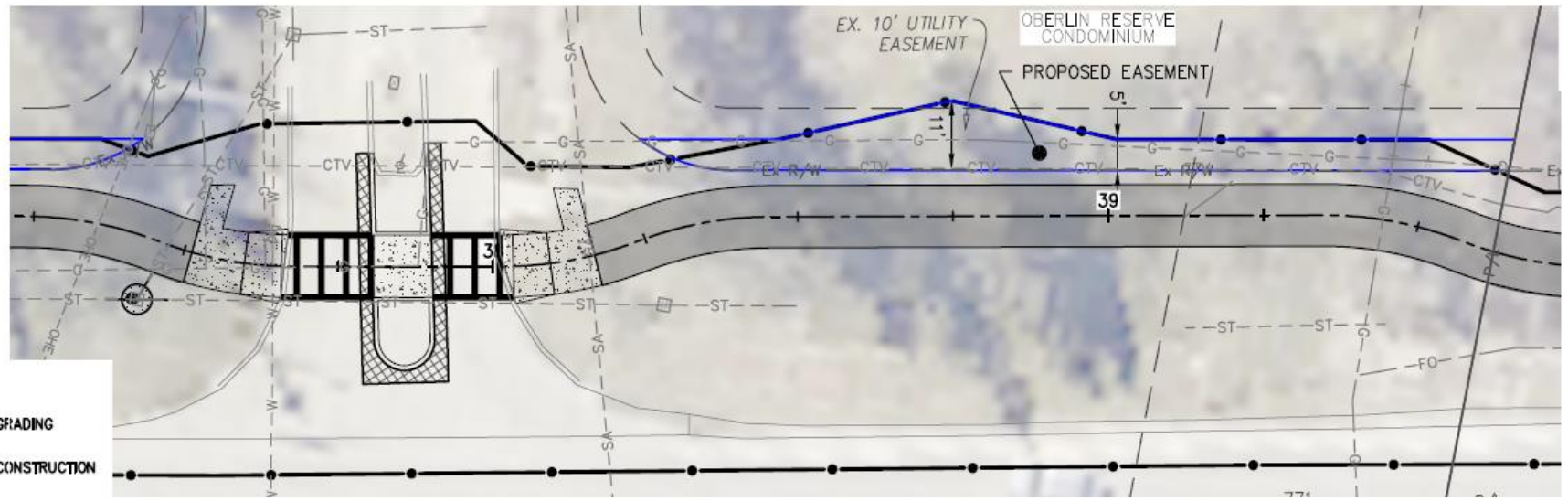
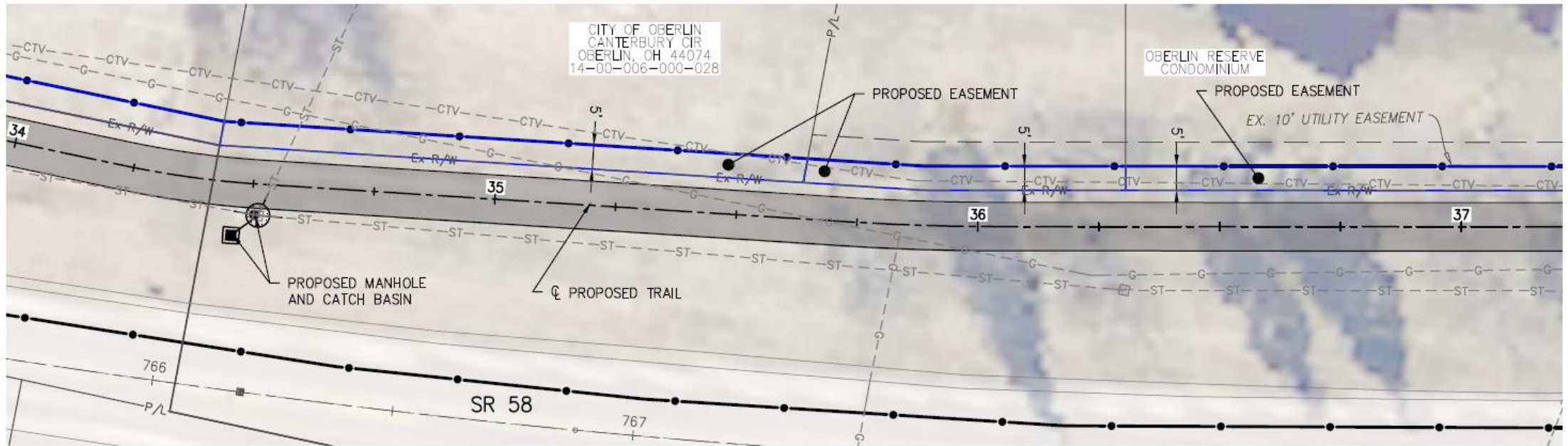


LEGEND

	TEMPORARY GRADING EASEMENT
	PERMANENT CONSTRUCTION EASEMENT

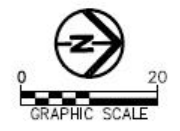
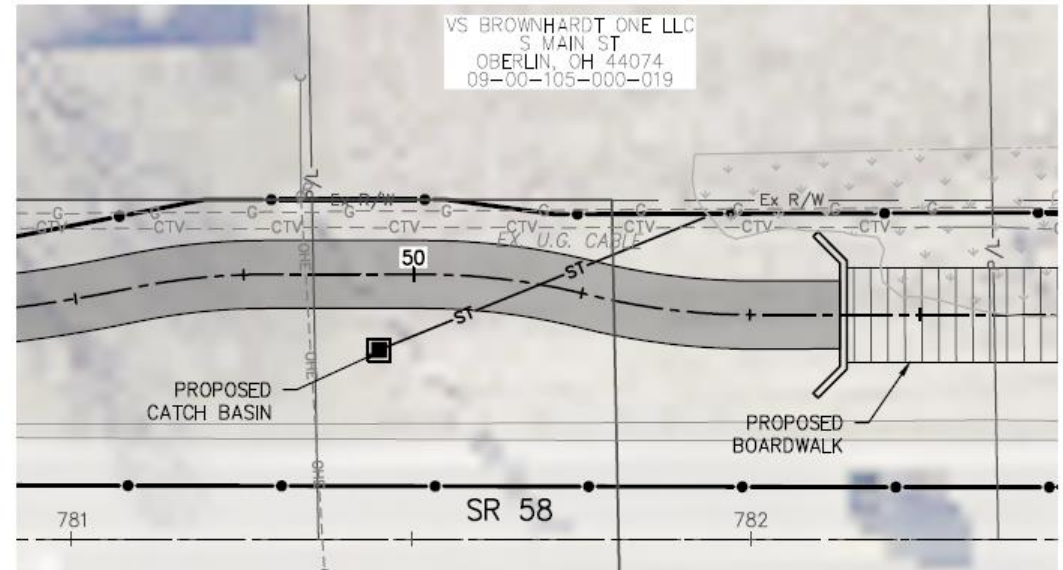
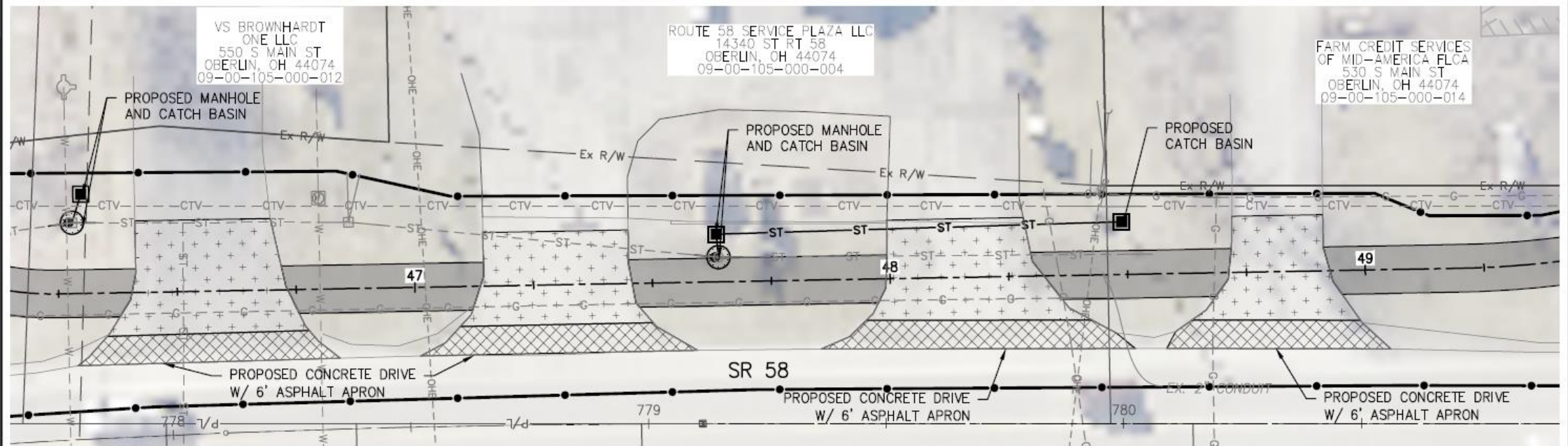


SR 58 ACTIVE TRANSPORTATION IMPROVEMENTS
 CITY OF OBERLIN
 PROPOSED EASEMENT EXHIBIT
 JANUARY 31, 2024

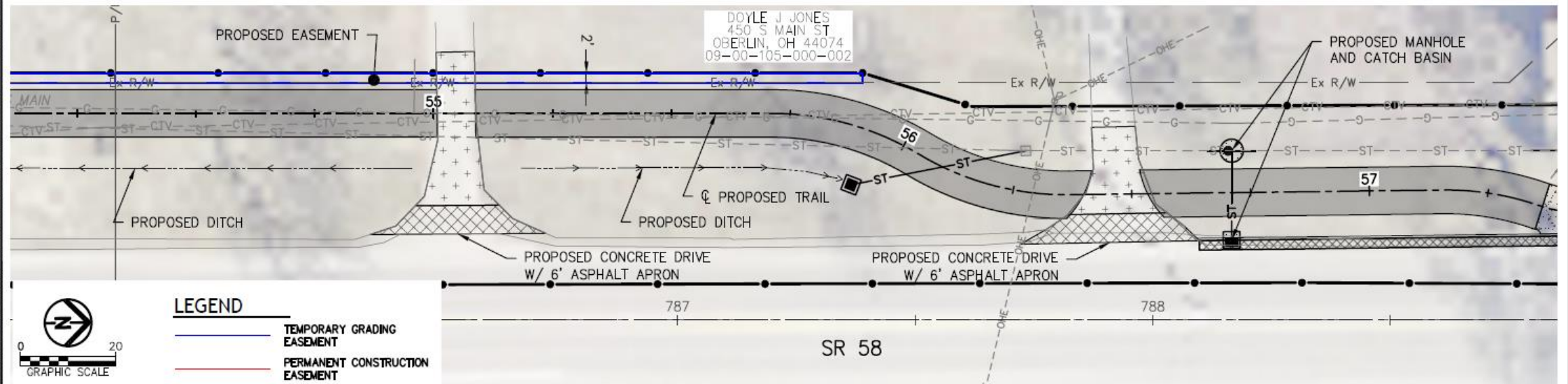
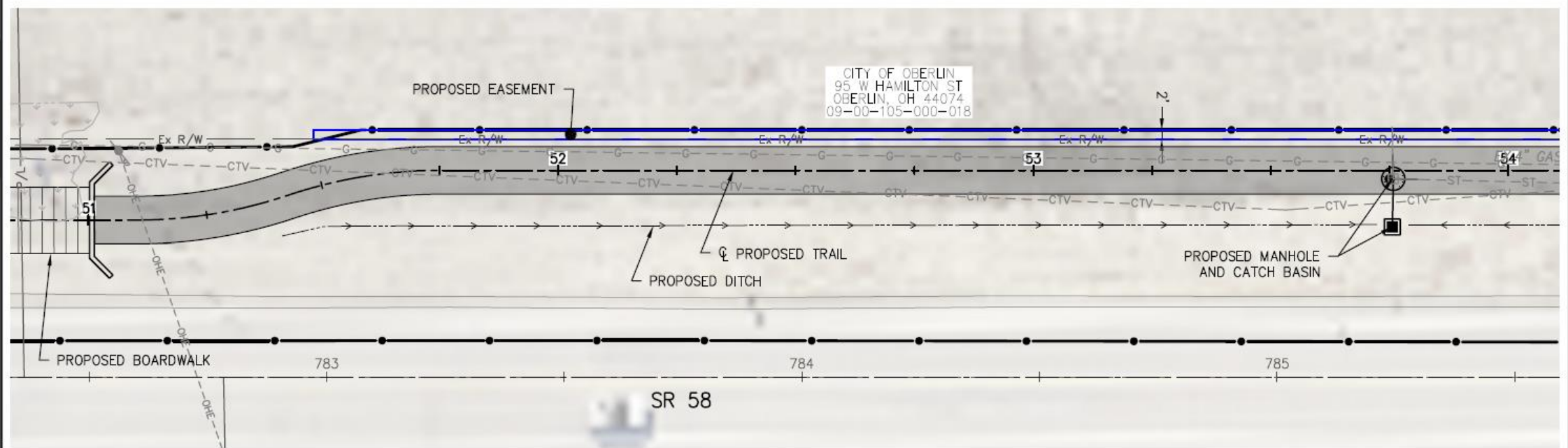


LEGEND

	TEMPORARY GRADING EASEMENT
	PERMANENT CONSTRUCTION EASEMENT

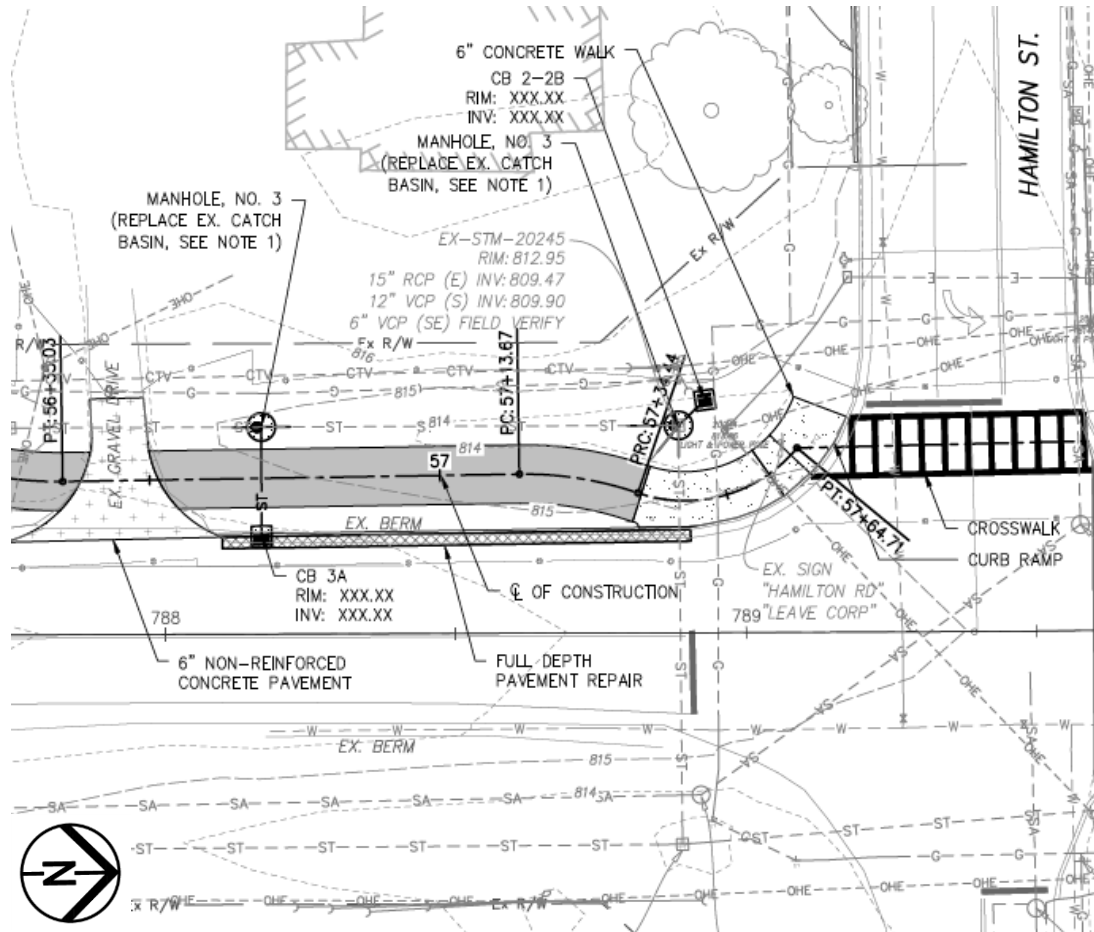


- LEGEND**
- TEMPORARY GRADING EASEMENT
 - PERMANENT CONSTRUCTION EASEMENT



- LEGEND**
- TEMPORARY GRADING EASEMENT
 - PERMANENT CONSTRUCTION EASEMENT

Connection at Hamilton St.



- Concrete sidewalk with ADA Ramp
- Striped Crosswalk to existing ADA Ramp on northwest corner
- Extended curb for safety and drainage
- New catch basin and storm sewer connection
- Other storm sewer modifications as required